



# Time to explore!



## NEW 2014

- La Terre gagnera  
(The Earth Wins)
- Le Ballon des Puys

**PRESS CONTACT**  
**Françoise PERRET**  
+ 33 4 73 19 70 16 / + 33 6 86 55 07 11  
[francoise.perret@vulcania.com](mailto:francoise.perret@vulcania.com)  
<http://presse.vulcania.com>

Follow [presse\\_vulcania](#) on Twitter  
Join Vulcania on Facebook



### ***VULCANIA SUPPORTS THE NOMINATION OF THE CHAÎNE DES PUYs AND THE LIMAGNE FAULT AS A UNESCO WORLD HERITAGE SITE***

Vulcania is nestled within the volcanoes of the Chaîne des Puys, part of the Auvergne Volcanic Regional Nature Park. Vulcania is devoted to raising awareness of the beauty and fragility of our ecosystem. A place of scientific mediation in volcanism and more generally for the planet Earth, Vulcania is understandably committed to supporting the nomination of the Chaîne des Puys and the Limagne Fault as a UNESCO World Heritage Site.

This commitment is reinforced by the concrete actions carried out in synergy with the Puy de Dôme General Council staff, including submitting the official nomination proposal of this site for France.

The park's main commitments consist of:

- Involving Vulcania's scientific staff and especially the Director of Science in the scientific portion of the nomination proposal;
- Informing and mobilising park visitors to support the nomination;
- Presenting and showcasing this unique heritage to park visitors.

Located in an exceptional natural environment, Vulcania's aim is to raise visitors' awareness of the planet's origins and evolution. The Earth's fury and its future are presented in many of the park's attractions.

Vulcania is part of the Auvergne Volcanic Regional Nature Park, with which it has a partnership to train Vulcania staff on showcasing the site's natural areas and carry out public awareness actions on Vulcania's natural environment. Since 2008, Vulcania signed, along with PNRVA and the CPIE of Haute-Loire, the Geotourism convention, which aims to raise public awareness in the tourist industry of the sustainable management of volcanic sites and areas in the Massif Central.

It was therefore only natural that Vulcania commit to an internationally recognised environmental policy. Vulcania was certified ISO14001 following the implementation of an interdisciplinary Environmental Management System.





Vulcania will open its doors on 19 March for the 2014 season with many new attractions. With 100% new content, Vulcania continues to offer visitors new experiences with the same ambition of being a family-friendly park where you have fun and enjoy learning.

To satisfy our visitors' appetite for innovation, we will be showing an Australian film, previously unreleased in France, on a giant 415 m<sup>2</sup> screen starting 19 March: "**La Terre Gagnera**" (The Earth Wins). Filmed on four continents, this 20-minute film shows the beauty and fragility of our planet with exceptional aerial footage. The impact and beauty of the images, accompanied by an exceptional soundtrack, invite us to reflect upon man's future on the Earth, where he is just one of many elements.

The other star of the season is the Chaîne des Puys, where Vulcania is located. The Chaîne des Puys and the Limagne Fault have been nominated as UNESCO World Heritage sites. Highly involved in this nomination, Vulcania already offers visitors many attractions and events to discover this exceptional heritage, especially "**Réveil des Géants d'Auvergne**" (The Giants of Auvergne Awaken, a 3D simulation with dynamic seats for experiencing the types of eruptions that can take place in the Chaîne des Puys), "**VolcanBul**" (discover volcanic landscapes, fauna and flora aboard a GPS-guided electric vehicle) and "**Planète dévoilée**" (The Earth Revealed, a virtual flight over the Earth to survey its geological wealth, with a scientific guide).

For this new season, we will be offering two other events on the Chaîne des Puys theme. As soon as the Park is open, an exhibition entitled "**La Chaîne des Puys en Relief**" (The Chaîne des Puys in Relief) will show around thirty exclusive 3D photographs,

some of which are aerial. Starting in June, Vulcania will be offering a 10-minute panoramic balloon ride, "**Le Ballon des Puys**"\*, with a guide to see and understand how the volcanic landscapes have shaped Auvergne. The new star attraction of the season will show visitors a panoramic view of the Auvergne volcanoes from 150 metres in the air.

There are many new attractions and events in 2014 in keeping with our desire to improve the park's infrastructures and offer visitors an ever more pleasant and enjoyable visit. It's important that everything in a park echo magic and discovery. That's why the **Cafétéria des Puys** has been entirely renovated with a new, friendlier design in volcanic colours that reflect the park's atmosphere. The 1500 m<sup>2</sup> **reception building** (of which 800 m<sup>2</sup> is covered) will be up and running in July with 13 tills, a 150 m<sup>2</sup> shop and a heated picnic room with a covered terrace to seat 250 people. In this way, Vulcania ensures a smoother, more fluid reception for visitors. Finally, at the end of May, park visitors can take advantage of a **caravan park**\*\* with 65 places and various services.

**We look forward to receiving our visitors from 19 March to 11 November!**

**Jean Mallot, President of Vulcania**

\* Opens June 2014. Information on page 6

\*\* Offer reserved for Vulcania customers. Information on page 21

## NEW 2014

- Around the world on the giant screen ..... P.6  
**La Terre gagnera (The Earth wins)**
- The Chaîne des Puys seen from above ..... P.6  
**Le Ballon des Puys**
- A 3D photo exhibition ..... P.7  
**Exhibition : La Chaîne des Puys en relief (The Chaîne des Puys in Relief)**
- A great figure in modern volcanology ..... P.7  
**Haroun Tazieff**



## SENSATIONS

- What if Auvergne's volcanoes suddenly woke up? ..... P.8  
**Le Réveil des géants d'Auvergne (The Giants of Auvergne Awaken)**
- Extreme adventures in the depths of the Earth ..... P.8  
**Dragon Ride**
- Facing the harsh elements ..... P.9  
**Terre en colère (Earth's Fury)**
- A mission to discover molten lava ..... P.9  
**Magma Explorer**

## EMOTIONS

- Journey to the Heart of the Legends ..... P.10  
**Volcans Sacrés (Sacred Volcanoes)**
- Flying over a supervolcano ..... P.10  
**Mission Toba**
- 415 m<sup>2</sup> of fiction : La Terre Gagnera (The Earth Wins) / Regards sur les Volcans (Eyes on the Volcanoes) .... P.11  
**L'Écran géant (The Giant Screen)**

## DISCOVERY

- The Earth revealed in all its glory ..... **NEW VERSION** ..... P.12  
**Planète dévoilée (The Earth Revealed)**
- An interactive journey to discover the Earth ..... P.12  
**Machine Terre (Earth Machine)**
- Auvergne in all its splendour ..... P.13  
**Les Maquettes (The Models)**
- A breathtaking phenomenon ..... P.13  
**Le Tunnel des nuées ardentes (The Tunnel of Pyroclastic Surges)**
- Spectacular red volcanoes ..... P.13  
**De lave et de feu (Lava and Fire)**
- Learn about science while having fun ..... P.14  
**(The Experimentation Area)**



## SPECIALLY FOR KIDS



- An exploration area for the little ones ..... P.15  
La Cité des enfants (Children's Museum)
- Models for children ..... **NEW 2014** P.16  
Vulcania en miniature (Vulcania in Miniature)
- Let loose in a life-sized natural setting ..... P.16  
Les aires de jeux (Children's Play Areas)
- A play area for the very little ones ..... P.16  
La galerie Pitoufeu (The Pitoufeu Gallery)
- The young explorers' mascot ..... P.17  
Le Poster jeu Pitoufeu (The Pitoufeu Poster Game)
- Celebrate your birthday in the Cité des Enfants ..... P.17  
L'offre anniversaire (Birthday Parties)

## NATURE BREAK

- A water totem over 20 m high ..... P.18  
Le Geyser
- A haven of subtropical greenery ..... P.18  
La Serre (The Greenhouse)
- The 360° nature experience ..... P.18  
Le VolcanBul

## PRACTICAL INFORMATION

- Calendar ..... P.19
- Summer evenings ..... P.19
- Prices ..... P.20
- Come back to Vulcania ..... P.20
- Vulcania packages ..... P.21
- Caravan car park ..... **NEW 2014** P.21
- The documentation centre ..... P.22
- Restaurants ..... P.22
- Shops ..... P.22
- Vulcania in brief ..... P.23

NEW 2014 !

# La Terre gagnera

## Around the world on a giant screen

Vulcania presents the exclusive showing of the Australian film "La Terre Gagnera" (The Earth Wins). Shown for the first time in France, this film shot in digital and shown on 70 mm film on a 415 m<sup>2</sup> giant screen is a journey to the wonders of our planet. Shot for over 7 years and across 4 continents, these astonishing images from the air and high-quality soundtrack make this film a unique work of art. The images are captivating and heart-rending, such as the ones shot over New Orleans after Katrina's passage. In this 20-minute film, the images do the talking with their strength and beauty, inviting us to reflect upon the future of man on the Earth, so essential to our survival.



ASTONISHING  
&  
AMAZING  
IMAGES

Previously  
unreleased in France

- Duration: 20 minutes.
- Film shot in digital.
- Shown on 70 mm film.
- An Australian film written and directed by Jerry Grayson, produced by Sara Hine and co-produced by Matt Downey.
- Shot entirely from the air.
- 7 years of filming across 4 continents.

PRODUCED BY: Helifilms

DIRECTED BY: Jerry Grayson

ORIGINAL SOUNDTRACK:

New Order

The Temper Trap

The Who

Coldplay

NEW 2014 !

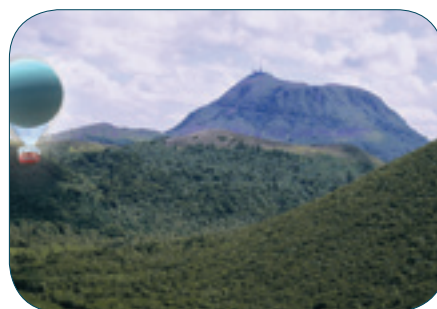
OPENS JUNE 2014

# Le Ballon des Puys

## The Chaîne des Puys seen from above

Vulcania takes visitors up with "Le Ballon des Puys"! One of a kind in Auvergne, this balloon offers an exceptional panoramic view of the Chaîne des Puys volcanoes. At 150 metres above the ground, it's the best observation post to understand this landscape shaped by volcanic activity and perhaps soon to be classified as a UNESCO world heritage site! A 10-minute ride in a silent, eco-friendly balloon with a pilot guide.

AN  
EXCEPTIONAL  
PANORAMA



Prices:

Activity  
requiring an  
extra fee,  
only for park  
visitors

Adults	€4.50
Children (ages 6 to 16)	€3.50
Young children (ages 3 to 5)	€2.50

The only one of its kind in Auvergne!

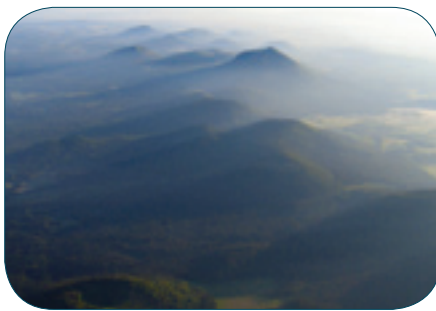
- Tethered helium balloon measuring 24 metres in diameter.
- 360° view of the Chaîne des Puys.
- 150 metres high.
- 30 passengers.
- 10-minute ride.
- Subject to favourable weather conditions.

NEW 2014 !

# La Chaîne des Puys en relief

A 3D photo exhibition

The Chaîne des Puys and the Limagne Fault have been nominated as UNESCO World Heritage sites. To support this nomination, Vulcania is presenting "**La Chaîne des Puys en Relief**" (The Chaîne des Puys in Relief), an outdoor exhibition comprising 3D anaglyphs and videos. This exhibition shows the site's unique geological heritage with around thirty photographs, some of which are aerial. Located on the outskirts of the park near "Le Ballon des Puys", this 3D photo gallery illustrates the splendour of the landscapes and the variety of the puy "seen from above"!



AN  
**EXCEPTIONAL  
VOLCANIC  
HERITAGE**

SPECIAL ANNIVERSARY

## Haroun Tazieff

A great figure in modern volcanology

Beginning mid-May

He was one of the fathers of modern volcanology! An engineer, agronomist, geologist and volcanologist, Haroun Tazieff shared his passion for volcanoes with the public through thirty books, dozens of popular science documents, forty films and a hundred scientific publications. He died on 2 February 1998.

The year 2014 marks the 100th anniversary of his birth (11 May 1914). A brief retrospective looks back on the rich life of volcanologist Haroun Tazieff whose strong personality sometimes propelled him directly to the heart of some very heated scientific debates. This great figure of modern volcanology has made contributed considerably to raising public awareness of volcanoes in the 20th century, thanks to his many films and books.

A DARING  
**VOLCANOLOGIST**



# VULCANIA SENSATIONS



## LE RÉVEIL DES GÉANTS D'Auvergne WHAT IF THE VOLCANOES SUDDENLY WOKE UP?

What would happen if the hundreds of volcanoes that make up the Chaîne des Puys suddenly woke from their sleep? The 3D film "**Le Réveil des Géants d'Auvergne**" (The Giants of Auvergne Awaken) answers this question that crosses the mind of every visitor to Vulcania. With a blend of thrills, excitement and scientific know-how, this attraction plunges the spectator into the action, thanks to its motion seats and visual, sound, tactile and olfactory effects..

4D film  
Duration: 12 min.  
Motion seats  
150 seats including 6 for PRM  
6 combined special effects: wind  
(high and low), smells, water, ticklers,  
vibrations, lights  
HD digital film

 Dynamic +

### A fictional film with sensations that feel more real than the real thing

*The film shows plausible scenarios that explain what would happen if the Massif Central volcanoes were to erupt. The magic of 3D and stereoscopic images shot in Auvergne's natural sites enlightens visitors about stages in their history.*



## DRAGON RIDE EXTREME ADVENTURES IN THE DEPTHS OF THE EARTH

A totally immersive and dynamic attraction, "**Dragon Ride**" leads its passengers to the depths of the Earth to meet these fabulous creatures, the dragons. The action takes place in the very depths of Vulcania, inside the fault itself, naturally present right underneath the park. Visitors set off to explore this vertiginous fault that has been showing some worrisome signs. They are plunged into a world inhabited by dragons, a myriad of colours and types, and some are bent on 'playing' with our visitors! This fantasy ride, which lasts around four minutes, combines a 4D film and 25 double dynamic modules - unique in France - as well as wind and heat effects for intense thrills!

### A fantastic ride to the heart of a dragon-inhabited world

*Before science provided more rational answers, these monsters were often blamed for triggering tsunamis, earthquakes, volcanic eruptions and basically any manifestations of the power of the elements. Among the many mythical creatures, four dragons star in this impressive attraction, each representing one of the elements (water, air, earth and fire): a Cerberus, a three-headed land monster who carefully guards the entrance gates to the Kingdom of the Dead; a Leviathan, a biblical sea monster with terrifying power, capable of overturning the planet; an air dragon, a diaphanous creature that often appears in myths from the Far East, floating majestically on the wings of the wind; and a fire dragon, a creature that lives in the fire of volcanoes and is the cause of their fury.*

4D film  
Duration: 4 min.  
25 double dynamic modules  
50 seats including 2 for PRM  
3 combined special effects: wind, heat,  
lights  
7.1 sound  
2G speed: 400 movements per second

 Dynamic +



# VULCANIA SENSATIONS



## TERRE EN COLERE FACING THE HARSH ELEMENTS

Welcome on board the interactive simulator, “**Terre en Colère**” (Earth’s Fury). With Sabine QUINDOU on the controls, the audience chooses its scenario and then answers a series of questions. A “pre-show” starts the session and presents the attraction to the audience by providing comprehensive information about impressive and devastating natural phenomena to which they will be exposed. Then totally caught up in the heat of the action, the public chooses their programme, selecting 3 out of the 6 scenarios offered: rogue wave, avalanche, lava flow, earthquake, tornado or meteor strike. Six minutes and 30 seconds of pure excitement and an amazing show. After each simulation, Sabine QUINDOU suggests what we can do in the case of such events. Will the audience know what to do?

### An interactive platform

*This simulation is based on dynamic platforms synchronised with film sequences that simulate the movements and tremors experienced during great natural phenomena. The show invites the audience to a confrontation with the raging elements through a combination of natural physical effects. After each simulation, the audience gains a broader understanding of these phenomena and their causes through questions. With this activity, Vulcania combines learning with excitement as the audience experiences the Earth’s six furies. Each phenomenon in Terre en Colère is part of the history of mankind. Visitors can truly experience the Earth’s fury through this totally immersive attraction, which reproduces the shakes, sways and accelerations of these phenomena while showing the movie clips.*

Duration: 6 min. 30 sec.  
60 seats including 6 for PRM  
Interactivity depending on the audience’s  
vote: real-time compositing  
3 motion platforms  
3 directions of movement  
Up to 1 G acceleration  
3 combined special effects: swaying,  
vibrations, acceleration

 Dynamic +



## MAGMA EXPLORER A MISSION TO DISCOVER MOLTEN LAVA

Who has not dreamt of entering the core of an active volcano?

With its own magma exploration shuttle, **Magma Explorer III**, Vulcania offers its visitors the chance to sail into the depths of a fully active volcano. During a virtual but eventful ride, visitors become “volcanauts”, discovering the mysterious universe of a volcano’s magma chamber through five portholes and witnessing an eruption from the inside. Climbing, shaking, sudden stops, rolls and hot winds punctuate the “progression” of the shuttle for maximum thrills!

### Plunged into the core of a volcano!

*Getting inside a volcano and exploring its roots is a dream shared by many scientists: Jules Verne, in his novel Journey to the Centre of the Earth; Maurice Krafft, who dreamt about being carried away by a wave of lava enclosed in a refrigerated titanium sphere; David Stevenson, who proposed to send a probe to the Earth’s core by placing it in a mass of 100,000 tonnes of molten steel which would reach the Earth’s core within a week. It is this experience that brings Magma Explorer to life for the park’s visitors.*

Duration: 3 min.  
36 seats (2 for PRM)  
5 multi-screen portholes  
5 projections with computer-generated imagery  
Motion platform  
Up to 1 G acceleration  
Heat

 Dynamic +

# VULCANIA EMOTIONS



## VOLCANS SACRÉS JOURNEY TO THE HEART OF THE LEGENDS

It's rare for a volcano not to be associated with a legend or a story, big or small, making it everyday reality. Numerous myths born from the often-tumultuous co-existence between man and these fiery mountains continue to be as relevant today. **"Volcans Sacrés"** (Sacred Volcanoes), Vulcania's new attraction, will take visitors on a journey to the heart of these legends. From continent to continent, six emblematic volcanoes punctuate this trip: Devil's Tower in the United States, Lengai in Tanzania, Vesuvius in Italy, Bromo in Indonesia, Fuji-san in Japan, and Kilauea in Hawaii.

### A captivating, immersive attraction!

*Sailing along a lava flow, legends are revealed one by one in original surroundings with authentic sound effects and pictorial narratives combined with an array of projections and special effects. The 600 m<sup>2</sup> of complete immersion into accurate historical content make this attraction a real world tour of the legends.*

A 5-minute ride  
Around 500 people/hour  
Eight 6-seater vehicles  
Rotating tunnel  
6 environments 3D decors  
Effects: light projections,  
smoke and smells  
10 animatronic characters

✦ Dynamic



## MISSION TOBA FLYING OVER A SUPERVOLCANO

**"Mission Toba"** invites visitors to embark on an extraordinary voyage into time and space to encounter a supervolcano. On board futuristically designed vessels, visitors fly in squadron over the Toba region in Indonesia, the site of a spectacular explosion over 74,000 years ago. To experience and discover this eruption, the public is plunged into a new room equipped with a 180° screen and floor projections which reinforce the immersive experience. During the flight over Toba, visitors can witness first-hand the overwhelming power of the supervolcanoes.

### Dive into a spectacular eruption

*Toba, an Indonesian tourist spot, takes the form of a vast oval lake with off-the-scale dimensions (100 km long, 30 km wide, 500 m deep). Although it does not look like a traditional volcano, it is nonetheless an impressive example. The Toba volcano exploded 74,000 years ago during Earth's biggest violent eruption in millions of years. The ejected ash and volcanic material have reached a colossal volume of 2,800 km<sup>3</sup>, the equivalent of 5 metres of ash covering the entire country of France! Following the eruption, the void left by the volcano caused the roof of the magma chamber to collapse, creating a huge depression. Rainwater and run-off have gradually filled it, giving rise to the present lake. The consequences of this prehistoric eruption were considerable. The fauna and flora were devastated, the world plunged into a volcanic winter and, according to some researchers, part of the human population from the time may have been lost.*

Duration: 4 min. 52 sec.  
60 seats and 2 PRM  
180° screen  
Frontal image of 5400 X1200 pixels  
Motion floor projection  
Nacelle movements coordinate with  
camera movements

✦ Dynamic

# VULCANIA EMOTIONS



## L'ÉCRAN GÉANT (THE GIANT SCREEN) 415 M<sup>2</sup> OF FICTION

In this room that seats 400, two films shot in 70 mm format are shown on a 415 m<sup>2</sup> screen.

### > LA TERRE GAGNERA

A **new attraction in 2014**, with beautiful images magnified by the giant screen. Shot entirely from the air, this first-time release in France invites visitors to reflect upon man's future. Twenty minutes to go around the world on a giant screen!

### > REGARDS SUR LES VOLCANS

"**Regards sur les Volcans**" (Eyes on the Volcanoes) takes visitors on a voyage to the world's active volcanoes. Vivid images of erupting volcanoes, interspersed with sequences reminiscent of mythological or historical events, depict scenes of men and volcanoes.

Duration: 20 min.  
394 seats - up to 6 PRM  
415 m<sup>2</sup> screen  
Shown in 70 mm  
24 frames per second

Film



## L'ÉCRAN GÉANT (THE GIANT SCREEN) SPECIAL KIDS' SESSION

### > ODYSSÉE MAGIQUE (MAGICAL ODYSSEY)

This fictional tale, shot entirely in natural settings, tells the story of the young Martin, guided by a seductive magical creature, Titania. Together they travel the world and discover that although the Earth is beautiful, it is also very fragile.

Duration: 20 min.  
394 seats - up to 6 PRM  
415 m<sup>2</sup> screen  
Shown in 70 mm  
24 frames per second

Film

# VULCANIA DISCOVERY

NEW VERSION



## PLANÈTE DÉVOILÉE THE EARTH REVEALED IN ALL ITS GLORY

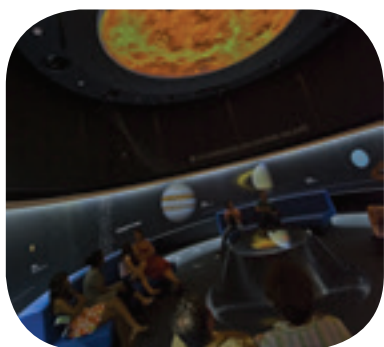
"Planète dévoilée" (The Earth Revealed) invites visitors on a virtual real-time journey of discovery thanks to satellite images of Earth's landscapes. Brand new navigation software, scientific mediation and audience interaction comprise the unusual recipe for this high-tech attraction. The audience embarks on a unique voyage to witness the Earth's beauty and fragility, thanks to images of outstanding quality and the complicity of the Vulcania host.

### An interactive, high-definition world tour

Much more than a simple observation of the Earth, Planète Dévoilée invites visitors to take part in a real world tour lasting 45 minutes. From the globe's remotest sites to its highest peaks, the audience rediscovers our planet through a perfect reproduction of its colours and reliefs. This voyage explores volcanism, the richness of biodiversity and the effects of climate change, all with live commentary from a scientific expert. The novelty of this attraction is that the audience can ask questions. This discussion game between the visitors and the Planète Dévoilée host establishes dialogue and leads to journeys of the mind encouraged by the visitors' own curiosity.

Duration: 45 min.  
218 seats and 6 PRM  
12-metre wide screen  
Dolby 5.1 Sound  
HD projection  
170 TB of PlanetObserver data  
Satellite data with 5m/pixel definition  
Digital Elevation Model (DEM) with 10 times  
higher definition

🎧 Médiation



## MACHINE TERRE AN INTERACTIVE JOURNEY TO DISCOVER THE EARTH

Holograms, touch table, interactive floor, overhead projections, and hemispherical screens: "Machine Terre" offers an abundance of technology to unravel the Earth's mysteries. Discover the amazing formation of the solar system in a carousel, walk across a giant image of the Earth, play with video windows to understand what is happening beneath our feet, observe the planets on semi-spherical screens, play with landscapes on a touch table, and much more.

### A 100% interactive experience to unravel the mysteries of our planet

In this space dug out of authentic lava flow, visitors are in interaction with the room. As actors in their own journeys, they play a role in discovering our planet, its formation, its functions and the internal forces that drive it. The incredible adventure of the appearance of life on Earth is projected on to a spherical screen measuring 1.60 m called the Globe of Life. Ephemeral and fragile, just like life on Earth, the butterfly takes visitors through this dazzling space of ingenuity.

9 seats  
1 Globocces measuring 1.54 m  
Interactive floor projection 8.5 m in diameter  
6 motion detection cameras  
1 pivoting platform measuring 6 m  
Zenithal projection  
Infrared detection

🎮 Exhibition



# VULCANIA DISCOVERY

## LES MAQUETTES AUVERGNE IN ALL ITS SPLENDOUR!

Spread over 120 m<sup>2</sup>, four giant models of the Chaîne des Puys and all of Auvergne's volcanoes enable visitors to discover the importance of volcanism in the region but also to understand how they function, thanks to an animated cross-section of the earth's crust. Exhibited at the heart of the Cône de Vulcania (Vulcania Cone), these models are a reflection of the park's constant concern to offer new exhibitions and new forms of scientific mediation, especially for young people.

### A panorama of Auvergne's main volcano ranges

*The model of Auvergne (Allier, Puy-de-Dôme, Cantal, Haute-Loire) highlights the region's geological structures. The Chaîne des Puys includes a hundred volcanoes aligned from north to south. Some puys (rounded volcanoes) have disappeared, victims of the intensive exploitation of their scoria (pozzolan). The complex Massif des Monts Dore is much larger. Its last eruptions occurred 230,000 years ago. Further south, there are the immense plateaus of Cézalier, the lava flow remains which today are covered in pastures that extend to the horizon. The Cantal stratovolcano is the largest volcanic structure in Europe. Today the Cantal is the remnant of a large volcano whose altitude exceeds 3,000 metres. The collapse of its sidewalls and Quaternary glacial erosion have decapitated it and hacked out large radial valleys. Its last eruption dates back 3 million years.*

## LE TUNNEL DES NUÉES ARDENTES AN AWE-INSPIRING PHENOMENON

In keeping with Krafft's commitment to raise awareness about the danger of grey volcanoes, "**Le Tunnel des Nuées Ardentes**" (The Tunnel of Pyroclastic Surges) draws in the public to experience the destructive grey volcano blast. This space dedicated to grey volcanoes also offers the chance to rediscover, through images from particularly captivating archives, the eruption of Mount St Helens in the United States.

### An immersive spectacle in real time

*Mount St Helens, 18 May 1980: a powerful volcanic earthquake occurred, devastating the volcano's northern flank. The magma and gases under pressure that had built up in the structure were brutally released. A burning lateral blast hits the slopes of the volcano and crossed hills and valleys at more than 500 km per hour. An ash plume reached over 25 km altitude in 15 minutes. The volcano lost 430 m from its peak. The wind swept millions of trees over 30 km in the surrounding area. An area of 600 km<sup>2</sup>, or six times the city of Paris, was devastated. A seven-minute documentary shot on the spot presents striking images of this disaster, which changed our understanding of the explosive eruptions of grey volcanoes.*

## DE LAVE ET DE FEU SPECTACULAR RED VOLCANOES

The temporary exhibition "**De Lave et de Feu**" (Lava and Fire) sheds new light on red volcanoes, those effusive volcanoes which are one of the most beautiful expressions of telluric forces in the world. Each volcano's eruption is more beautiful than the last. With their fluid lava and projections, they are windows of observation into the depths of the Earth.

### A fascinating encounter with spectacular volcanoes

*Beyond the images that command admiration and humility in the face of volcanic power, the exhibition allows the visitor to come face to face with the functioning of these truly photogenic volcanoes, which are so rightly often considered the world's most beautiful volcanoes. Photographs, samples and videos from the Krafft collection are exhibited throughout the journey. Through this exhibition, Vulcania offers a new approach to the power of volcanoes by focusing on the intense and majestic red volcanoes, with the power to stupefy the collective imagination.*



120 m<sup>2</sup> for discovering volcanic relief  
in the region

Exhibition



The grey volcanoes' destructive blast

Film



230 m<sup>2</sup> area  
Photos and samples by Maurice and Katia Krafft

Exhibition



# VULCANIA DISCOVERY



Interactive workshops for  
or the whole family

Médiation

## LE COIN DES EXPÉRIENCES LEARN ABOUT SCIENCE WHILE HAVING FUN!

Simulate a volcanic eruption using a sand volcano?

Save the city of Clermont-Ferrand from a lava flow in less than three minutes?

These are some of the challenges presented at "**Le Coin des Expériences**" (The Experimentation Area). The Vulcania scientific team welcomes children and their parents to actively research and learn through simulations and games. This space is accessible to all at weekends and during the school holidays. During school term time, "**Le Coin des Expériences**" (The Experimentation Area) is open to both primary and secondary school children.

### Fun educational activities

*Four themed rooms (Earth, Volcanoes, Natural Hazards and Auvergne) offer workshops and fun hands-on activities based on natural and physical phenomena. Accompanied by scientific experts, children can ignite the sand volcano, explore the inside of the Earth, determine the epicentre of an earthquake and trigger a pyroclastic flow...*

• **Sur la trace des dinosaures** (In Pursuit of the Dinosaurs - duration: 45 minutes)

*Step into a palaeontologist's shoes in this workshop! Make a mould of footprints left behind by dinosaurs, reconstruct their skeletons and dig for traces of their past.*

• **Volcan de Sable** (Sand Volcano - duration: 10 to 20 minutes depending on the programme)

*Watch this volcano, currently the most active in Auvergne, as it erupts before you! Visitors learn to understand and control it with the help of Vulcania's scientific hosts.*

• **Sauvez Clermont** (Save Clermont - duration: 30 minutes)

*Careful, eruption is imminent! Clermont-Ferrand is threatened by a lava flow. Visitors must help save the town during this unprecedented crisis in Auvergne. Once they understand what the problem is, they only have 2 minutes left to save Clermont-Ferrand!*

• **Drôles d'expériences** (Strange Experiments - duration: 30 minutes)

*Visitors conduct surprising experiments proposed by the park's mediation team and unravel the mysteries of various physical and chemical phenomena. Experiments and discoveries are on the agenda.*

• **Séismes / Quand la Terre tremble** (Earthquakes / When the Earth Trembles - duration: 30 minutes)

*What happens during an earthquake? What exactly is an earthquake? Models and demonstrations help visitors understand the phenomenon.*

• **Du magma aux volcans d'Auvergne** (From Magma to Auvergne Volcanoes - duration: 30 minutes)

*To find out everything there is to know about how magma forms and the main shapes of the Auvergne volcanoes. Through explanations and manual experiments, visitors will learn it all.*

• **Auvergne, la connaissez-vous vraiment ?** (What do you really know about Auvergne? - duration: 30 minutes)

*Just game shows on television, young and old alike can play this game and see Auvergne in a different light, just for the fun of it.*



# VULCANIA

## SPECIALLY FOR KIDS



## LA CITÉ DES ENFANTS

### AN EXPLORATION AREA FOR THE LITTLE ONES

In partnership with the La Cité des Sciences et de l'Industrie, "La Cité des Enfants" (Children's Museum) is entirely dedicated to children ages 3 to 7, providing them with interesting and varied age-suitable opportunities to experience exploration. This 300 m<sup>2</sup> space supports children's development and their awareness of the world. There they find various interactive and fun workshops on the senses, experimentation and active discovery. These young explorers will touch and play with gears, water mills and valves in four play areas: Discovering movements, Discovering the senses, Discovering light, and Experimenting with water. Their parents are invited to watch, encourage and play with their children in this area where they are their children's guests..

### Raise children's awareness of science

*La Cité des Enfants has arrived at Vulcania and children are the stars of the show! Designed with the Universcience teams, this place of exploration suitable for children ages 3-7 allows them, through play, to fine-tune their motor skills, learn to build relationships of cause and effect, and develop their ability to anticipate, thus improving their sensory abilities. A space designed and produced in partnership with the La Cité des Sciences et de l'Industrie, a Universcience establishment in Paris*

300 m<sup>2</sup> of exploration for children ages 3-7

45-minute sessions

90 children per session

4 areas: Discovering movement /

Discovering the senses / Discovering light /

Experimenting with water

3 "sense" modules hearing, smell, touch

4 "movement" modules

2 "light" modules

5 "water" modules: dams, ball fountain, bubble columns, vortex and faucets with a capacity of

5 m<sup>3</sup> of treated recycled water



Pitoufeu



# VULCANIA SPECIALLY FOR KIDS



NEW 2014

## VULCANIA EN MINIATURE MODELS FOR CHILDREN

To the delight of young and old alike, Playmobil has reinvented Vulcania with models specially designed for the park! Relive the park's highlights in the Playmobil decor! Relive the Vulcania experience and attractions such as Le Réveil des Géants d'Auvergne (The Giants of Auvergne Awaken) and Dragon Ride through a child's eyes.

3 models  
In partnership with Playmobil®

 Pitoufeu



Fun and adventure  
for children ages 3-12 years

 Pitoufeu

## LES AIRES DE JEUX (PLAY AREAS) LET LOOSE IN A LIFE-SIZED NATURAL SETTING

Located a short distance from the building, these areas welcome children for a burst of fun. In the different outdoor play areas, children can climb, go through a hanging tunnel or try the zip-line, under the careful supervision of their parents (for age 3 and over depending on the game)



## LA GALERIE PITOUFEU INDOOR PLAY AREA FOR THE LITTLE ONES

Young visitors can follow Pitoufeu's obstacle course to have fun and develop their motor skills in a 100% safe environment.

*This gallery is perfect for gambolling, weaving in and out and imagining new adventures in an area that is perfectly suited to children ages 3-7 years.*

130 m<sup>2</sup>  
Welcomes up to 30 children  
22 game modules

 Pitoufeu



# VULCANIA SPECIALLY FOR KIDS



Pitoufeu knows all the secrets of volcanism



Pitoufeu

## LE POSTER JEU PITOUFEU (POSTER GAME) THE YOUNG EXPLORERS' MASCOT

One fine day on a volcanic plain, the earth began to shake. All its inhabitants feared an eruption and the birth of a new volcano. But to their surprise, it was a small being that emerged from the depths of the Earth. Cone-shaped and strangely resembling another Auvergne symbol, this highly expressive character began to jump, play, explore, smoke and sputter. Then he settled down in the place he considered his rightful home: Vulcania!

*The young shorts-clad explorers discover Vulcania by playing with Pitoufeu in an attractive and interactive scavenger hunt. The Vulcania mascot invites them to follow the course that is scattered with clues which enable them to learn more about the secrets of volcanism!*



A personalised afternoon  
for children ages 3-7 years



Pitoufeu

## L'OFFRE ANNIVERSAIRE CELEBRATE YOUR BIRTHDAY IN THE "CITÉ DES ENFANTS"

Vulcania offers a birthday afternoon event for children ages 3-7 designed by "La Cité des Enfants". The park has created this event based mainly around this attraction. On the agenda: a guided tour of a Vulcania attraction as well as a private session in La Cité des Enfants. And of course, there is no birthday party without candles, so the afternoon is topped off by a snack!

*This all-inclusive offer is available for €167 for a group of 10 children and all information is available on the park's website [www.vulcania.com](http://www.vulcania.com).*



# VULCANIA NATURE BREAK



## LE GEYSER WATER TOTEM OVER 20 METRES HIGH

Typical of some recently active volcanic regions, "Le Geyser" is a real water totem spouting almost 20 metres of water in the heart of a landscaped caldera dedicated entirely to water. In a preserved natural area ideal for relaxing with the family, this garden boasts springs, fountains and interactive water games to entertain both young and old alike! Representing an impressive volcanic phenomenon, Le Geyser springs right next to Vulcania's iconic cone.

*When surface water filters into the soil and encounters the residual heat of magmatic areas, the result is quite spectacular: this water, heated to over 100°C deep in the ground, periodically gushes to the surface in multiple jets and plumes of steam mixed with hot water. These post-volcanic phenomena can sometimes continue for thousands of years long after the eruption has stopped.*

150 m3 of treated recycled water  
20 metres high  
2 detection lasers  
4 water games



## LA SERRE (THE GREENHOUSE) A HAVEN OF SUBTROPICAL GREENERY

Bathed in the light that flows through the glass window, "La Serre" (The Greenhouse) invites you to walk under its arborescent ferns from New Zealand and in the midst of exotic plants typical of upland subtropical volcanic regions. Located right on Auvergne's very own volcanic rock, the vegetation in this area was already composed of our planet's primitive forests some hundreds of millions of years ago.

*This haven of greenery symbolises vegetation's recovery of land ravaged by the fury of volcanoes. In fact, when weather conditions are favourable, even after the most devastating of eruptions, the flora quickly reasserts its presence on fertile ash and cooled lava flows. Occasional water misting meets the needs of plants that need a lot of water.*

An impressive bouquet of nature



## LE VOLCANBUL THE 360° NATURE EXPERIENCE

With "VolcanBul", visitors can discover the extraordinary richness of the Auvergne's volcanic landscape, flora and fauna. Thanks to GPS guidance, this driverless mode of transport is electric, quiet and completely automatic. Throughout the course, a Vulcania host provides live interactive commentary about the landscape that has shaped the park's environment.

*Vulcania's surroundings offer magnificent viewpoints of the cinder cones and domes in the central part of the Chaîne des Puys. Using clean and ecological vehicles, visitors can discover this volcanic environment, unique in Europe. The young shapes are proof of the recent geological history of our region (28 seats including one seat for a person with reduced mobility).*

28 seats including 1 for PRM  
3 electric vehicles  
Radar anti-collision system  
GPS guidance system  
Silent



# VULCANIA

## PRACTICAL INFORMATION

### CALENDAR

	1	2	3	4	5	6	7	8	9	10	11	12	13	14	15	16	17	18	19	20	21	22	23	24	25	26	27	28	29	30	31
March																			W	Th	F	Sa	Su	M	Tu	W	Th	F	Sa	Su	M
April	Tu	W	Th	F	Sa	Su	M	Tu	W	Th	F	Sa	Su	M	Tu	W	Th	F	Sa	Su	M	Tu	W	Th	F	Sa	Su	M	Tu	W	Th
May	Th	F	Sa	Su	M	Tu	W	Th	F	Sa	Su	M	Tu	W	Th	F	Sa	Su	M	Tu	W	Th	F	Sa	Su	M	Tu	W	Th	F	Sa
June	Su	M	Tu	W	Th	F	Sa	Su	M	Tu	W	Th	F	Sa	Su	M	Tu	W	Th	F	Sa	Su	M	Tu	W	Th	F	Sa	Su	M	Tu
July	Tu	W	Th	F	Sa	Su	M	Tu	W	Th	F	Sa	Su	M	Tu	W	Th	F	Sa	Su	M	Tu	W	Th	F	Sa	Su	M	Tu	W	Th
August	F	Sa	Su	M	Tu	W	Th	F	Sa	Su	M	Tu	W	Th	F	Sa	Su	M	Tu	W	Th	F	Sa	Su	M	Tu	W	Th	F	Sa	Su
September	M	Tu	W	Th	F	Sa	Su	M	Tu	W	Th	F	Sa	Su	M	Tu	W	Th	F	Sa	Su	M	Tu	W	Th	F	Sa	Su	M	Tu	W
October	W	Th	F	Sa	Su	M	Tu	W	Th	F	Sa	Su	M	Tu	W	Th	F	Sa	Su	M	Tu	W	Th	F	Sa	Su	M	Tu	W	Th	F
November	Sa	Su	M	Tu	W	Th	F	Sa	Su	M	Tu	W	Th	F	Sa	Su	M	Tu	W	Th	F	Sa	Su	M	Tu	W	Th	F	Sa	Su	M

This calendar may be modified without prior notice

from 10:00 to 18:00 >>> from march 19th to june 30th - from august 30th to november 11th

from 10:00 to 18:30 >>> from july 1st to 20th - from august 23th to 29th

from 10:00 to 19:00 >>> from july 21th to august 22th

from 10:00 to 22:00 >>> 23 and 30 july - 5, 6, 12, 13, 20 and 27th august

The park is closed on 24th march, 25th march, on mondays and tuesdays from september 1st to october 14th and from november 3rd to november 7th.



## SUMMER EVENINGS

### DISCOVER THE MAGICAL AMBIENCE OF VULCANIA BY NIGHT

The park is open from 10.00 to 22.00. Starting from 18.00, Vulcania enters evening mode with open attractions, special events such as "**Expériences, c'est show!**" (Experiments steal the show), and **street theatre** with the troupe Elixir. The show ends with a dragon parade followed by a final, **20-minute pyrotechnic bouquet\***!

**23 and 30 July.**

**5, 6, 12, 13, 20 and 27 August.**

### TOURISM AND DISABILITIES



Certified with the Tourism & Handicap label for motor and hearing disabilities, Vulcania welcomes disabled individuals and groups. Vulcania is strongly committed to not only making the park accessible to all, but also to offering services to cater for all disabilities. For example, visitors can request a guide and French Sign Language (FSL) interpreter for a minimum of 5 participants (subject to the interpreter's availability). The visit is carried out with a Vulcania guide and the FSL interpreter (duration: 2 hours).

# VULCANIA

## PRACTICAL INFORMATION

### INDIVIDUAL RATES

Children under 3 are our free guests.

	Green period	Blue period	Yellow period open 10h/22h with fireworks **
<b>Adults</b> (Reduced rates*)	€23.50 €22	€26 €24.50	€27.50 €26.50
<b>Children</b> (ages 6 to 16) (Reduced rates*)	€16.50 €15.50	€18 €17	€19 €18
<b>Young children</b> (ages 3 to 5)	€5	€6	€7

**Green period** : excluding school holidays, national holidays and bank holidays.

**Blue period** : excluding school holidays, national holidays and bank holidays.

**Yellow period** : Wednesdays from 23 July to 27 August 2014, Tuesday 5 August 2014 and 12 August 2014.

\* Reduced rates apply to students, unemployed and disabled persons (with supporting documents)

\*\* Subject to favourable weather conditions



## COME BACK TO VULCANIA

### VULCANIA PASS

Annual passport valid for the entire 2014 season, allowing visitors to come back as many times as they'd like during the entire season.

Price: €35.50/adult, €25/child and €10/young child..

### 2<sup>ND</sup> DAY TICKET\*

Would you like to spend two days in Vulcania? Offer valid for a second visit within 7 days of the date of purchase, for visitors having purchased a first day ticket.

Price: €7/adult, €4/child and €4/young child.

\*Offer open to visitors having already purchased a ticket that is still valid.

# VULCANIA PACKAGES

## VULCANIA PACKAGES

WITH JUST ONE CLICK, BOOK YOUR STAY AT VULCANIA

This service was launched in June 2012 so that with just one click you can book your entire stay, including: **a one-day ticket, accommodations for the night and breakfast.** To offer a wide choice of accommodation, Vulcania has established partnerships with over a hundred hotels of different categories in the region. Booking online is easy: simply enter the date you wish to stay, the number of people and the site will display all available hotels with rates including park admission. **With 2-day/1-night stays available starting from €37\* per person, Vulcania is an attractive destination in an equally attractive region.**

*Hike on a volcano, discover immense plateaus, cross craters...only in Auvergne can you enjoy these experiences! The authentic and lively mountains of Auvergne form a unique playground due to the diversity of its landscapes and the multitude of activities on offer. With its volcanic scenery and mountains, its outdoor activities, spa towns and cities at the forefront of new technologies, Auvergne is an ideal family destination. Vulcania's site also offers the chance to prolong your stay in Auvergne in order to get the best of both worlds, with a themed visit that combines a trip to Vulcania with time to discover Auvergne's many other treasures. In 2012, over half of the stays booked included at least two nights in Auvergne, showing that visitors to Auvergne wanted to make the most of their visit to the park by treating themselves to an Auvergne getaway at the same time.*



ENTRY TO THE PARK +  
OVERNIGHT STAY + BREAKFAST

**€37** starting at  
per person

\*This offer cannot be used simultaneously with other offers. This offer is subject to availability for 2 adults and 2 children staying in a 1\* hotel during the 2014 green period, excluding booking fees, and only for stays booked at [sejours.vulcania.com](http://sejours.vulcania.com) via the Vulcania-sejours travel agency, registration no.: IM063120002.

NEW 2014



## CARAVAN CAR PARK SERVICE AREA AND CAR PARK

Vulcania proposes a 65-place caravan park with service stations, water and drainage facilities to make your stay and volcanic adventure as pleasant as possible. Offer reserved for Vulcania customers.

- > **Flat rate per night (from 17.00 to 10.30 the next day) €10** regardless of how long you park.
- > **Hourly rate (from 10.30 to 17.00) €2/hour.**
- > **Water token (100 l) €2 > Electricity token (6 hours) €2.**

# VULCANIA

## PRACTICAL INFORMATION



### THE DOCUMENTATION CENTRE

#### A WEALTH OF INFORMATION

With over 5,000 documents on Earth Sciences, Astronomy and Astrophysics, its regional heritage, natural environment and scientific culture, the Documentation Centre is open to all, from children to highly specialised individuals. Open on days Vulcania is open, starting from 13.30. Comics and children's books are available as well as multimedia resources (videos, DVDs, CD-ROMs, games, Internet access, etc.), educational tools (for primary and secondary students), features on science and the latest news, magazines, popular books and fiction, specialised volcanology documents, maps, tour guides, etc. An online documentation catalogue has thousands of impressive images from Maurice and Katia Krafft's collections.



### RESTAURANTS AT VULCANIA

*In addition to more classic options, Vulcania provides regional fare by offering Auvergne specialities such as truffade (potato pancake) or Auvergne cold meats, cheese and wines. Over 90% of our suppliers are regional.*

- 1 cafeteria for individuals, families and school groups can seat up to 900 (Adult Menu starting from €13.90; Children's Menu €7.90).
- Three takeaway outlets offer a range of sandwiches, snacks, and hot and cold drinks.
- A 74-seat brasserie serves only high-quality regional cuisine in a pleasant setting. In the summer, the brasserie seats 40 (Menu starting from €19.90; Children's Menu €11.50).
- 1 restaurant for groups, seminars and events seats up to 450.



### SHOPPING AT VULCANIA

**The park has two shops:** the **Sciences shop** and the **Auvergne shop**. The "**Pitoufeu**" (Vulcania mascot) product range includes **plush toys** for our youngest visitors and lots of jewellery (rings, necklaces etc.) and an "**I love Pitoufeu**" t-shirt especially for girls.

A new t-shirt and the classic bracelet complete the **Dragon Ride range**.

The "**Auvergne**" shop also has a new range, "**Vulcania in Auvergne**".

Many other souvenirs are also available (regional products, textiles, books, etc.).



## VULCANIA IN BRIEF

### **VULCANIA WAS BORN FROM A DREAM...**

It was Katia and Maurice KRAFFT's dream to create "Vulcania", a volcano museum inside the Puy de Dôme. In 1992, the Regional Council decided to open a volcano museum in the heart of the Chaîne des Puys in the Auvergne Volcanic Regional Nature Park. The heirs of Katia and Maurice KRAFFT donated their collection of objects as well as their user rights to sounds and images. In 1994, the project was entrusted to an Austrian architect, Hans HOLLEIN, with an investment of €123 million financed by the region, Europe and the French government.

### **VULCANIA OPENED ITS DOORS ON 20 FEBRUARY 2002**

The aim was twofold: firstly, to spread the latest knowledge about volcanology and earth sciences, and secondly, to drive economic, cultural and tourism development in the Auvergne region. After great initial success in its opening year, the park experienced a sharp decline in attendance due to the fact that its content was considered too difficult for visitors. The number of visitors declined from 600,000 visitors in 2002 to 220,000 in 2006.

### **2007, THE NEW VULCANIA**

In 2006, the new executive branch of the Regional Council decided to reinvest heavily in Vulcania to adapt the scenography to cater to families. The approved investment was €16 million over 5 years, including €2 million provided by the national government under the State-Region Projects Agreement. Thus in 2007, the new Vulcania opened its doors with the aim of offering the public new attractions with real scientific content but with more emphasis on fun. The results since 2007 have confirmed that this was the right move for the park. Attendance is growing every year and Vulcania celebrated its 4 millionth visitor in 2012 as figures stabilised around the 330,000 visitors per year mark.

### **A DRIVER FOR TOURISM DEVELOPMENT IN AUVERGNE**

As a driver for tourism development, the park must attract visitors to Auvergne and encourage them to stay. It has been reported that 80% of visitors come from outside Auvergne and over 50% come to the region for the main reason of visiting the park. In this way, Vulcania has fulfilled this essential role. Enriching the park's scenography and placing greater emphasis on Auvergne's landscapes, lengthening visiting hours and strengthening partnerships with tourism stakeholders have all contributed to Vulcania's economic spin-offs over the past six years. Today, 70% of visitors opt for paid accommodations. The firm CONTOURS has estimated Vulcania's economic spin-offs at around €37 million per year. According to a study by CRDT Auvergne, Vulcania is the second most popular tourist destination in the region after the Puy de Dôme

### **SEM VOLCANS**

Vulcania is operated by SEM Volcans with a capital of €3.6 million. The shareholders are Auvergne's main local authorities and major local economic stakeholders. SEM Volcans is chaired by Mr Jean Mallot and managed by Catherine Damesin.

As part of its environmental policy, SEM Volcans, which manages Vulcania as a public service delegation on behalf of the Regional Council, has committed to establishing a transversal Environmental Management System for all the company's services in compliance with the stipulations of the ISO 14001 standard. The Vulcania environmental policy focuses on waste management, reducing consumption, decreasing greenhouse gas emissions, and purchasing policy.

*\*Public service delegation*





## NOTES

This image shows a full page of white paper with horizontal blue or grey ruling lines. The lines are evenly spaced and run across the width of the page, typical of notebook paper. There are no margins, text, or other markings on the page.