



Press file 2020

Pas-de-Calais

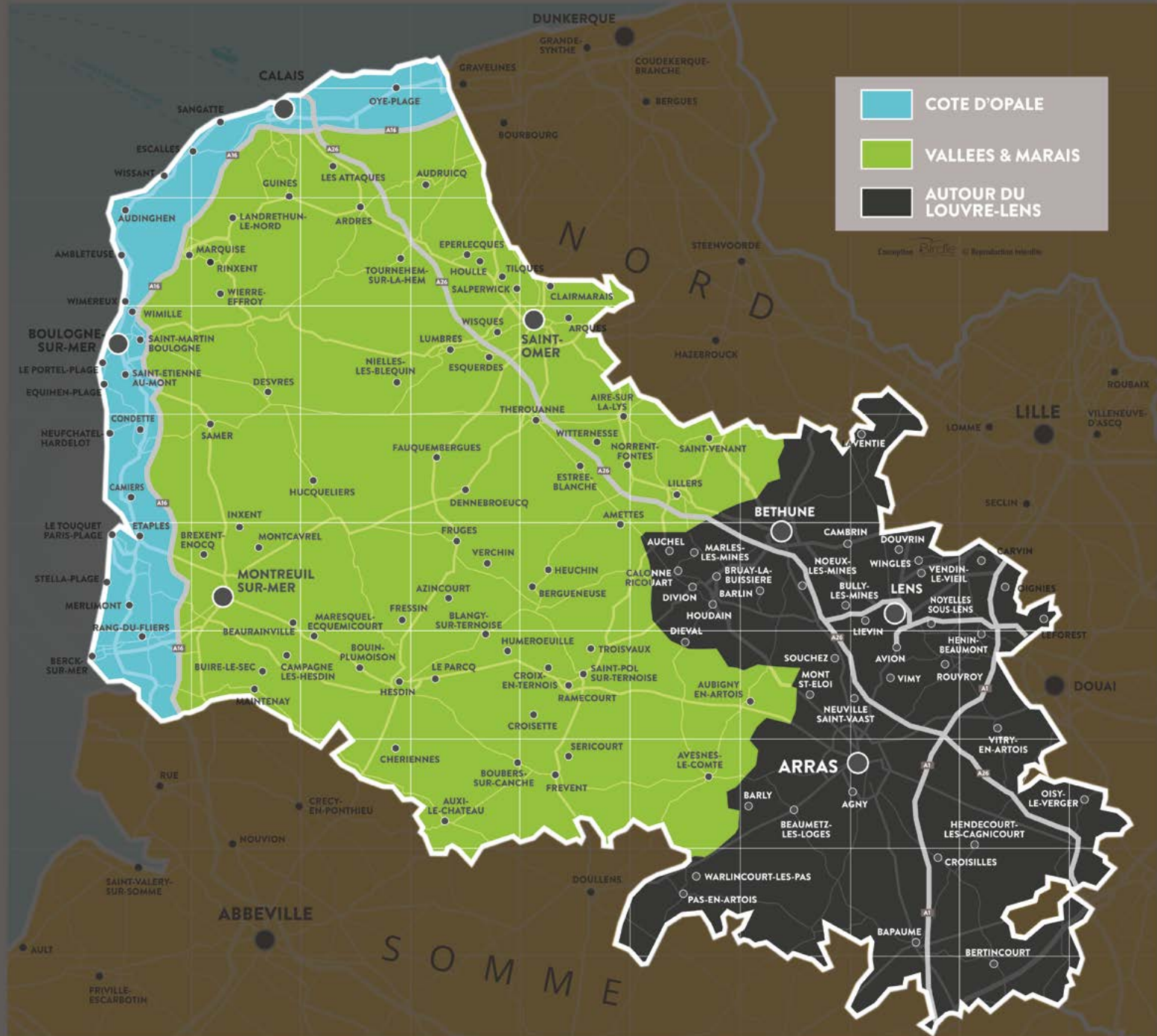
Three destinations, three ambiances

PAS-DE-CALAIS
TOURISM

OPAL
COAST

HILLS
& DALES

AROUND
LOUVRE-LENS



Access



TGV Nord (high speed train)

- Paris / Calais : 1h40
- Paris / Arras : 50 minutes

Eurostar

- Paris / Calais-Frethun : 1h30
- London / Calais : 1h00



DFDS & P&O Ferries
Dover / Calais : 1h30



Lille-Lesquin airport
Beauvais-Tillé airport



Motorways : A16 - A1 - A26

From main airports, by car To Calais
Paris Charles de Gaulle : 2h30
Paris Orly : 2h40
Zaventem-Brussels : 2h00
Brussels Charleroi : 2h20
London Heathrow : 3h00
Paris - Beauvais Tillé : 1h00
Lille Lesquin : 1h30



Folkestone / Calais : 35 minutes

Explore Pas-de-Calais' coast, towns and villages

The « **Grand Site de France** » label awarded to the Deux Caps, the opening of **Louvre-Lens**, the awarding of the UNESCO « Man and Biosphere » label to the Audomarois marshlands, the **Calais Dragon**, the classification of the belfries and the Coalfield Area as **UNESCO** World Heritage sites...

Pas-de-Calais is experiencing an unprecedented cultural and touristic dynamism.

Open to Europe, this area is represented by 3 tourism destinations:

the Opal Coast with its infinite shades of blue and green, **Hills & Dales** with the gentle tranquillity of the countryside and the innovative and cultural personality of the youthful **Around Louvre-Lens** destination.

With sea and cliffs, marshes and forests, slagheaps and belfries, the Pas-de-Calais has become a European destination that is bursting with memories and brimming with culture. Multi-faceted, the department offers a thousand and one faces and its people have so many stories to share...

www.visit-pas-de-calais.com



Opal Coast



Hills & Dales



Around
Louvre-Lens

PAS-DE-CAL TOURISME

Around Louvre-Lens



News

p.06

Must-sees

p.14

Opal Coast



News

p.17

Must-sees

p.22

Press contact

Benoît Diéval

00336 83 15 72 67
benoit@pas-de-calais.com

Pas-de-Calais Tourisme
Route de la Trésorerie
62126 Wimille
FRANCE



SUMMARY

5

Hills & Dales



News

p.26

Must-sees

p.33



Online & social media

p.37

LE NOIR DANS TOUS SES ÉTATS

UPERNOIR

From 29th May to 28th June

Unexpected jaunts Around Louvre-Lens

The new UPERNOIR event from 29th May to 28th June 2020 presents countless **experiences for visitors that are brought together under the banner of the colour black**, which acts as the connecting thread for adventures, escapades or trails that are **culinary, festive and cultural**.

Its programme takes up the challenge of awakening all the senses. Centred around the Louvre-Lens Museum and the listing of the Mining Basin as UNESCO World

Heritage, UPERNOIR reaches out across the regional capitals (**Lens, Béthune, Arras, Douai**, Saint-Amand-les-Eaux and Valenciennes), into the heart of its land and heritage, in order to help us discover, encounter and explore an area boasting a glorious past that can still be felt today across this unexpected destination, a destination waiting to be viewed from a different angle throughout spring 2020

UPER-great jaunts

UPER-great experiences **bring the colour black to the products of the terroir**, its trails, its culinary creations, its festivals, its traditional dishes but also its hubs of daily life...Piping hot chips are accompanied by their own black mayonnaise, dishes are enjoyed in total

darkness, 50 varieties of dark chocolate can be sampled, wines produced on the slag heaps can be enjoyed in moderation...

A whole world of flavours and sensations opens up to you.

UPER-cool events

UPER-cool events to experience together, with friends and family.

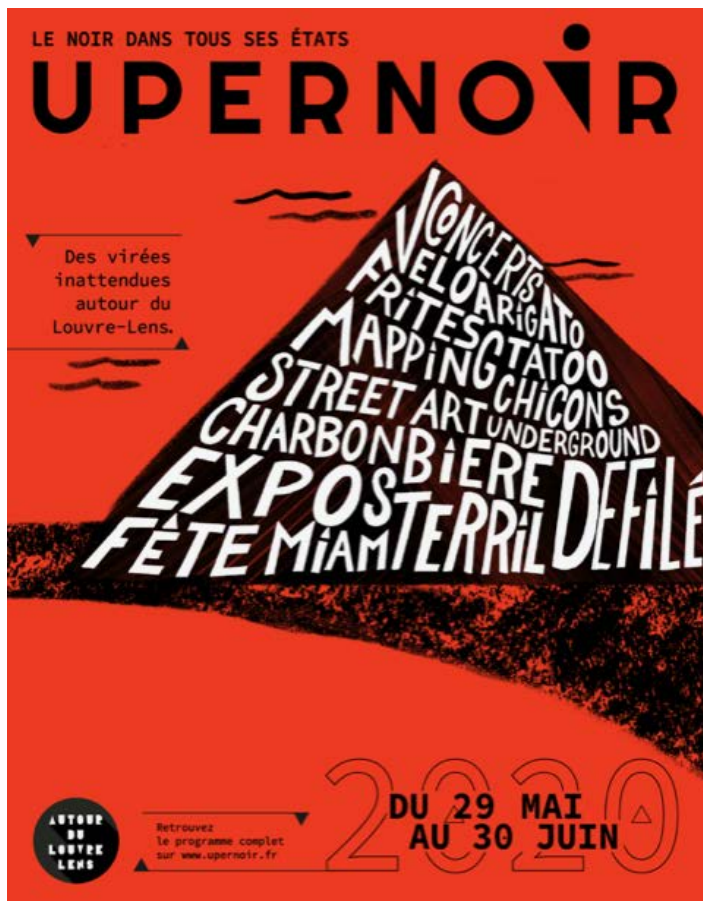
Enjoy creating your own programme of exhibitions, festivals, strolls across the slag heaps, light shows, art installations, photographic trails, creative workshops, sound installations, the black pyramid trail...

This generous offer relies on the local terroir with design elements inspired by **local industrial traditions, concerts, street art** and moments that bring everyone together.

UPER-stylish events

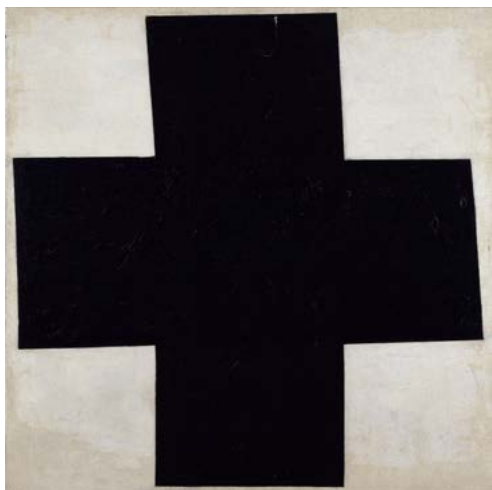
Through a series of trails you can explore UPER-stylish workshops and discoveries thanks to the ALL range of items showcasing regional savoir-faire: catwalk shows highlighting local textiles, accommodation sites, architecture, heritage...

Japan is guest of honour for this edition that spans the worlds of food and fashion.



« Black Suns » exhibition at Louvre-Lens

25th March - 13th July 2020



Kasimir Malevich, *Croix [noire]* 1915 © Centre Pompidou, MNAM-CCI, Dist. RMN-Grand Palais Philippe Migeot



Gustave Courbet *Le ruisseau du puits noir* © Toulouse, musée des Augustins. Photo Daniel Martin

Poetic and sensory, this exhibition offers an unexpected encounter with the masterpieces of modern painting and allows us to discover inspiring contemporary art.

Almost 75 years after the legendary

« Black is a Colour » exhibition, Louvre-Lens visitors are plunged into a fascinating look at this shade that carries so much symbolism in western art, **from Antiquity to the present day.**

The colour of paradox, is black an absence of light, a void, a glorious combination of all colours, a glare?

From the outset, the exhibition immerses the visitor in a familiar

experience of blackness thanks to artistic representations of themes that are omnipresent in the history of art, such as night and its black sky.

Archetypal and physiological, the colour black forms a structuring yet ambiguous element in the depiction of sacred themes, at once the colour of every beginning, of the infinite and timeless, but also representing death and ignorance. In this ambiguity lies fear and fascination in equal measure, all the seeds of melancholic sentiment that are so dear to artists seeking to enhance their creations with the beauty and sensuality of the colour black. In this way, black

becomes the iconic colour of industrial and aesthetic modernity. It leaves such an impression that it almost becomes a material substance in itself, constantly questioned, as can be evidenced today in the works of Pierre Soulages.

Inspired by the flattened slag heap upon which the Louvre-Lens Museum resides, the exhibition also pays homage to a mining past whose images are dominated by coal and the infinitely nuanced traces it has left behind.

www.louvre-lens.fr

« Lueur »: a reinterpretation of the miner's lamp.

In order to bolster its brand and its reach, the ALL brand has launched its very first competition based on the reinterpretation of an iconic object of the local area = the miner's lamp.

The brand wanted to revisit this powerful and symbolic object by teaming up with Lille Design (an economic development platform focusing on design) with the aim of seeking out talented young creatives and pitting them against one another for this project. It was Camille Khorram and Jean-Baptiste Ricatte, designers from Hauts-de-France and winners of the ALL competition, who had the honour of reinterpreting this piece. Using **thermochromics to finish a piece of Limoges porcelain, the black colour**

is erased upon contact with heat and leaves behind the whiteness of the underlying material and the warmth of the light. The wall of the candle jar was carved with a grid that recalls the steel screen that would encase the flame of the miner's lamp. The light reveals the varying thickness of the material, accentuating the motif once the candle is alight. The candle's flame echoes the very first miner's lamps and gives the object a living and human quality that is in step with the image of the Around Louvre-Lens destination. This lamp, 100% Made in France, highlights local savoir-faire to create a truly unique item. Available to buy from all Louvre-Lens brand stockists.

www.autourdulouvre-lens.fr/vivre/produits-derives





REMEMBRANCE

CWGC Experience, Beaurains (Arras)

8 Adding another cornerstone to the tourism and remembrance sites of Arras.

Opened in June 2019 and located in Beaurains, close to Arras, the CWGC in France commemorates more than 570,000 Commonwealth soldiers who fell during the First and Second World Wars. It is responsible for managing 3,000 cemeteries and memorials, including 1,300 of its own cemeteries and memorials and around 1,700 sites at municipal cemeteries. A growing number of visitors head to these CWGC cemeteries and discover its memorials.

Nevertheless, a great many of these visitors are not aware of the history of these cemeteries, of the important role they play in remembrance, nor

of the history of the people who maintain them. Thanks to the CWGC Experience, young and old alike can learn about this work, which is revealed to them like never before. From the immense task of organising the world's largest gardening project to the painstaking job of engraving the names of the soldiers, **CWGC staff explain the work they themselves do to visitors.** They express the feelings they have as they maintain these special sites that lie at the heart of our remembrance of the soldiers who fell at the front.

The aim of the CWGC Experience is to help visitors learn more about the history of the Commonwealth War Graves Commission and to provide

them with a new perspective on these cemeteries and memorials, which will allow this association to continue its work with ever greater enthusiasm.

Throughout the visit, members of the public can take the time to explore different areas devoted to the various aspects of the Commission's work (**from producing headstones to gardening and touching on carpentry, ironwork, stonecutting...**).

Free entry. Audio-guide available free of charge, in French and English.

www.cwgc.org

The award for Best New Tourism Project in Europe

After having visited the CWGC Experience in July 2019, **John Ruler** enthusiastically lent his support to the Interpretation Centre and spoke on its behalf at the **British Guild of Travel Writers** awards dinner. This

certainly paid off, as the award for Best New Tourism Project in Europe was presented to Victoria Wallace, director general of the CWGC..

Weekend: Heaps of Trails

Fashioned by many generations of men and women, the landscapes of the Around Louvre-Lens destination provide the ideal playground for lovers of trail running.

Tackling a trail is not just about encountering nature, it's also about communicating with it, making it your ally and eventually pushing the limits of your own nature. Whether you are preparing for a competition or simply seeking a place to train that takes you away from it all, come and test yourself on the slopes of our slag heaps and take advantage of a brand new facility: **the first trail running arena built on a slag heap**, at Noyelles-sous-Lens. From spring onwards, the tourist office of Lens-Liévin concocts tailor-made breaks that combine sport and relaxation for small groups of trail enthusiasts: accommodation at L'Arena in Liévin or at a group gîte, training and coaching.

www.lens-destinationtrail.com



The Points-Noeuds intersecting cycling network Vallée de la Lys & Monts de Flandre

Since it was launched in June 2019, the **first Points-Noeuds intersecting cycling network in France** has proved a real success with lovers of cycling tourism, especially the Belgians. Between Lys and Monts de Flandre lie 830km to discover by bike offering some wonderful trips, including nearly 120km in the Vallée de la Lys. The advantage is that **riders can set their own tailor-made itinerary** using the map depending on their preferences and physical ability: time available, number of kilometres, villages and points of interest.

Three key departure points are suggested in the Béthune-Bruay area: Saint-Venant (river stop), Mont-Bernenchon (rue des Écoles) and Richebourg (motorhome park).

www.lenordavelo.fr



Liévin, guardian of the works of the Louvre

Since the end of 2019, no fewer than **250,000 works have been progressively moved from the archives of the Louvre in Paris** to the conservation centre at the Louvre-Lens in Liévin.

At risk from the River Seine's floods, these works of art can now be safeguarded, housed and cherished at the Louvre's conservation centre in Liévin.

A unique and functional venue that provides the optimum conditions for the preservation of these works, the centre will also be a work space that aims to welcome partners (museum professionals, restaurateurs, photographers...), researchers and universities who wish to consult these pieces, carry out research and run training programmes.

The centre will not open to the public but may throw open its doors exceptionally, as it did in 2019 during the Heritage Days event in September!

www.louvre-lens.fr



Les rêveries Nomades

Achicourt

A haven of peace, this **guest house** is situated 5 minutes by bike from the town centre of Arras. This old square farmhouse boasts a large park with vegetable garden in which Sandrine makes it a point of principle to live in the most Eco-responsible manner possible. This sets the tone for every stay here, from the organic cotton linen to a breakfast of home-made bread and preserves, as well as the dairy products, charcuterie and other accompaniments that are also organically produced. You'll find the same thing if you want to take advantage of the table d'hôtes or the gourmet picnic baskets.

This guest house currently has 3 rooms, including a family room, as well as a genuine Roulotte gypsy caravan at the end of the garden! You can borrow a bike with a deposit.

From 75 Euros per night.



www.lesreveriesnomades.fr

Les Nid'îles

Maisnil-les-Ruitz

At Parc d'Olhain the current trend is glamping thanks to the opening of a quirky accommodation site focused on nature: the Nid'îles, unique in Hauts-de-France. This is **a ball, 3 metres in diameter, which hangs securely in the trees** at the heart of the Forest of Olhain and is accessible via a pathway of net bridges. It is equipped with a large round bed and extremely cosy sheets, pillows and duvets. Lighting is provided by a simple headlamp. Lavatories are located in the camp site. The Nid'île offers the unique experience of sleeping in the heart of nature beneath the stars. In the morning, the song of nearby birds will awake you. From 15th April to 15th October. From 125 Euros per night.



www.parcdolhain.fr

Appart-Hôtel Relax Spa

Lens

Situated in the city centre, the apart-hotels are in the immediate vicinity of the restaurants, shops, railway station and the Louvre-Lens whilst still being in a quiet spot. Prettily decorated, the furnished apartments are well-equipped. The Spa feel is obvious in each of the apartments (balneotherapy bath, hammam shower, hydro massage jets...). For a short stay with the family, you can take advantage of hotel services. From 80 Euros per night.



www.appart.hotel-lens.com

Beer

The Lens-Liévin Beer Tour

Lens-Liévin



Established in May 2019, set off to explore 3 local breweries: a veritable journey into the typical local savoir-faire, an immersive visit with the brewers of the Brasserie de Mai (Carvin), the Brasserie Castelain (Benifontaine) and the Brasserie St Germain (Aix-Noulette).

Rates: €45 (price includes transport, visits, tastings and lunch) – one date per quarter.

www.tourisme-lenslievin.com

Lunch in a Carin

Bruay-la-Buissière



What's a «Carin»? These are small annexes to the miners' homes that served as hutches, chicken coops, laundry rooms or sheds for garden tools. At the heart of the Cité des Électriciens, **one such Carin has been transformed into a locavore eatery** that can seat up to twenty diners. When the weather is fine, they open the sun-kissed terrace.

Fruit and vegetables from local vegetable gardens and locally sourced ingredients are used in dishes prepared by Julien Specque from L'Inédit and Maggie Deleglise from BookKafé.

The restaurant only serves two set menus, a mark of quality and freshness.

www.citedeselectriciens.fr

Dishes with history

Souchez



Originally a hotel for families who have come to visit the cemeteries of Notre-Dame-de-Lorette, this white building located just **beside the 14-18 Memorial in Souchez** is nowadays home to the kitchen of Chef Olivier Duez, former Chef and proprietor of L'Art des Mets in Béthune.

Open since early 2020, the master restaurateur and his whole team from Béthune now serve gastronomic cuisine with a bistro feel using great ingredients for around 40 diners.

www.art-des-mets.com

Coeur de braise, the first Made in Lens beer

A new arrival on the local area's brewing scene, Coeur de Braise was born in the Saint-Théodore brewery in Lens, in the centre of a former mining town. Among the ingredients used to create it, lots and lots of love is vital... Coeur de Braise is the story of an encounter between Justine, who grew up alongside the sounds of the mine with a sense of its heritage, and Rubens, who arrived from the land of "braise wood" or Pau-Brasil, the tree that gave its name to Brazil.

Rubens started out in brewing 10 years ago in Brazil and set up home in Lens when he fell in love with Justine. Together they first opened a restaurant, Le Derby opposite the Louvre-Lens Museum, which then became the Saint-Théodore micro-brewery. This micro-brewery takes its name from the mining town in which it is located: Saint-Théodore is also known as Cité 9, situated across from Pit 9

(where the Louvre- Lens Museum now stands). In terms of flavours, Coeur de Braise changes depending on the mash used by Rubens and every barrel is different. It already has a little sister, La Lensoise, and something tells us that this family looks set to get bigger still...





www.louvrelens.fr

J.-A.D. Ingres (1780-1867), *Portrait de Madame Rivière*, 1805 Huile sur toile, Paris, musée du Louvre ©

2020 HIGHLIGHTS

Pablo Picasso's louvre

Louvre-Lens - 23rd Septembre 2020 to 25th January 2021

The Louvre is a fundamental place for understanding the work of Pablo Picasso (1881-1973).

From its very first visit in 1900 to the exhibition of his own works in the Grande Galerie in 1971, the museum has a special place in the artist's imagination.

This exhibition explores both the dialogue that Picasso's work has established with the collections of the Louvre, and the **links that the largest museum in the world has had at heart to weave with the artist** and his work since the 1930s.

www.louvrelens.fr

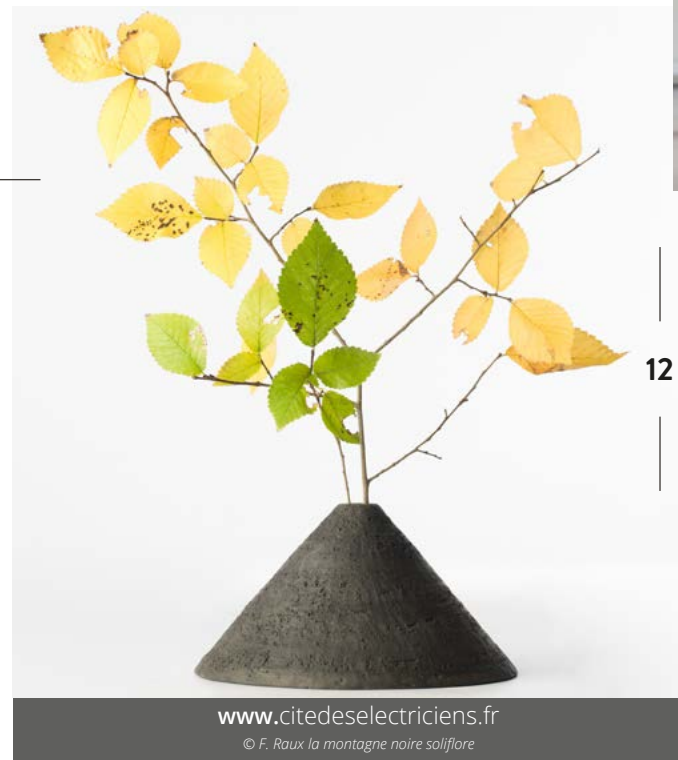
When Design pays Heritage a visit

Cité des Électriciens, Bruay-la-Buissière - 8th Feb - 9th August 2020

Arthur Lenglin, Tim Defleur and Benjamin Helle are three designers originally from Hauts-de-France that make up the Æquo Collective. Driven by a desire to showcase the region through sustainably and ethically produced furniture, they drew inspiration from mining heritage and from the **book of trends produced by ALL - Around Louvre-Lens** - for their first collection: vases or lights in the form of the slag heaps, coat hooks that use the brick motif of the miners' villages.

Following their 2019 residency at the Cité des Électriciens, Æquo now restore local workshops and run them alongside local people to present the objects they create.

Discover how our **history and our heritage influence the creation of design pieces**. A second project aims to recreate an imaginary home of a mining family using modern-day items.



www.citedeselectriciens.fr

© F. Raux la montagne noire soliflore



Around Louvre-Lens, 10 must-sees

Another way of visiting the Louvre

Set in a **50 acre green parc**, located on a former slag heap, the Louvre-Lens opened in 2012 and has led to the development of an array of cultural and tourism projects.

Among its treasures, this museum houses « **the gallery of time** ».

With more than 200 works taken from the Louvre in Paris, it offers a trip through 5000 years of the history of art, from the birth of the written word up until the mid-XIXth Century. It provides an unexpected connection between

works drawn from different schools of art, techniques and civilisations.

A partial renovation of the time gallery is carried out every year, around the date of the museum's anniversary.

From late 2020 to early 2021, the gallery of time will be entirely transformed.

Details not available at time of printing

Since the museum opened in 2012 access to the time gallery has been free.

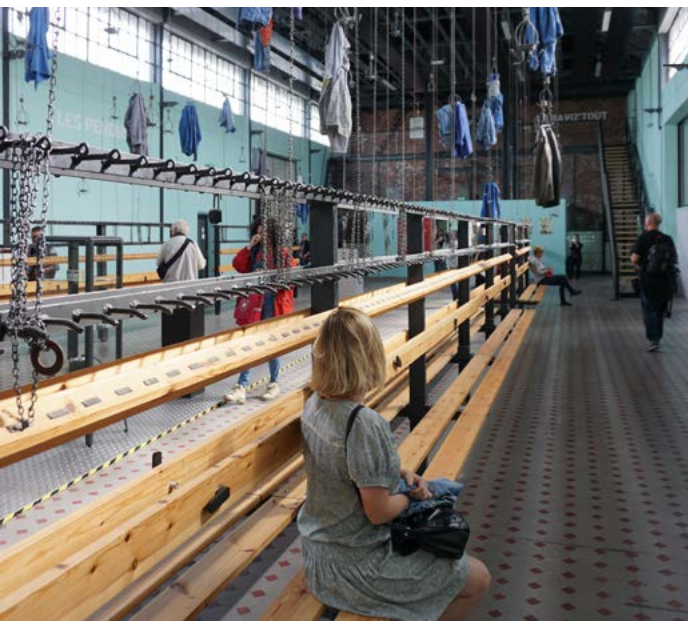
Temporary exhibition rates

Adult : 10€
18-25 y.o. : 5€
Under 18 : free

The Gallery of Time is free for all.

Louvre-Lens, rue Paul Bert, Lens
www.louvre-lens.fr – Tel : 00333 21 18 62 62

Must-sees : Around Louvre-Lens



Discover the remarkable mining heritage sites

Across 353 sites in the Mining Basin that are listed by **UNESCO**, five are recognised as remarkable sites.

Pit 11/19 in Loos-en-Gohelle has become a knowledge hub with regards to sustainable development; the Mining History Centre of Lewarde is the **largest mining museum in France** ; the 9-9 Bis in Oignies combines heritage and regeneration, focusing on current music; Wallers-Arenberg is home to the « Creative Mine » audio-visual centre and the Cité des Electriciens in Bruay-la-Buissière, **the oldest Coron mining village** in the Mining Basin, which has been entirely restored (opened May 2018).

UNESCO sites listed here :

www.bassinminier-patrimoine mondial.org

Experience the main events around the Louvre-Lens

People in the mining basin have always loved getting together for a celebration.

More than ever, the destination Around Louvre-Lens is bursting with energy, offering a multitude of gatherings, big and small.

Exhibitions at the Louvre-Lens, the Les Enchanteurs festival, Les Rutilants, the Main Square Festival, Béthune Retro, the arts and crafts fair... a month never goes by without there being a rendez-vous to experience or a festival to share !

www.aroundlouvrelens.com



Climb the highest slag heaps in Europe

From the summit of the twin slagheaps of Loos-en-Gohelle, the views are unbeatable. At **145 metres above sea level**, the view stretches for 30 kilometres in all directions.

Nature has steadily reconquered these mountains of schist that, nowadays, provide a veritable playground for walkers, sporty types and families. A walk reveals some beautiful **botanical surprises**, with a chance to discover dozens of rare plants known as thermophiles.

La Chaîne des terrils

Rue Léon Blum, à Loos-en-Gohelle

www.chainedesterrils.eu

Tel : 00333 21 28 17 28

Must-sees around Louvre-Lens

Going from belfry to belfry

Whether you are in **Arras, Béthune or Boulogne-sur-Mer**, they are impossible to miss !

The belfries, veritable reference points for locals and visitors alike, proudly loom above the heart of the towns of Northern France. Built in the Middle Ages as a **symbol of the freedom of local communities**, they have been classified as World Heritage by UNESCO.

Special mention must go to the one in Béthune, set in the centre of the stunning Art-Deco square.

www.tourisme-bethune-bruay.fr – Tel : 00333 21 52 50 00



They came from across the globe

In this key sector between the Ypres battlefields and the River Somme, the Artois was defended by the French until February 1916, and then by the Commonwealth nations **(British, Canadians, Newfoundlanders, South Africans, Indians, Australians and New Zealanders)**.

Many cemeteries and memorials are witnesses of this diversity.

Find out more on

www.history-pas-de-calais.com

Explore the treasures of Art deco

In the 1920s the communes of Northern France that had been **devastated by WW1** began their **reconstruction**. Architects called upon the style that was in vogue during the inter-war years; **Art deco**. Arras, Béthune and Lens saw countless Art deco buildings spring up. Lens railway station, whose silhouette recalls a steam locomotive, the former headquarters of the Lens Mining Company and the Art deco swimming pool of Bruay-la-Buissière offer some of its finest examples.

www.printempsartdeco.fr





Guided visit :
the Boves underground tunnels + climbing up the belfry.
7,30€ / 5€
www.arraspaysdarts.com - Tel : 000333 21 51 26 95

Sample Page 24 craft beer at the Saint-Germain brewery

At the origin of this brewery established in 2003 are three beer enthusiasts that wanted to bring their own recipes to life.

From the outset, the brewery's philosophy was founded on **using local ingredients in order to carry on the brewing and agricultural traditions** of the region.

The result: the flagship beers of the Page 24 range are brewed exclusively from local hops.



Admire the architecture of the squares in Arras

Discovering Arras begins at the Grand'Place and the Place des Héros, famous for their façades in the **Flemish-Baroque style**.

On the Place des Héros, the Town Hall can be visited from top to bottom by scaling the UNESCO-listed belfry and descending into the Boves, an underground network of galleries beneath the building.

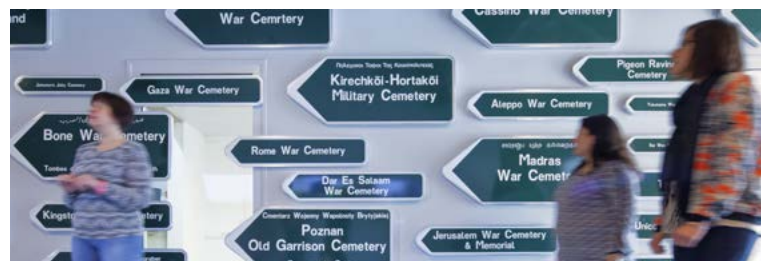
When the weather is fine, the terraces that flank these squares are the ideal places for enjoying the unique architectural setting.

Step into the history of WW1

16

Major museums and visitor centres allow the public to understand the causes and consequences of the First World War.

The largest French cemetery at **Notre-Dame de Lorette** and the **Ring of Remembrance** international memorial, **Lens'14-18** war & peace centre, the **Wellington Quarry**; the visitor centre, parc and Canadian memorial at **Vimy Ridge**.



In June 2019, the **CWGC Experience** has opened its doors to the public and gives an insight on the work of the organisation.

Tours each Saturday 5€

Brasserie Saint-Germain 26, route d'Arras, à Aix-Noulette

www.page24.fr

Tél : 00333 21 72 24 24

A list of the main visitor sites can be found online on

www.history-pas-de-calais.com,



A DRAGON IN CALAIS

Sitting at the top of the belfry of the town hall in Calais, a dragon weather vane indicates the direction of the wind. Is this a subtle warning about the arrival of the Dragon of Calais?

By choosing to create a dragon, François Delarozier, director of the La Machine Company, is employing a universal figure. Dragons can be found in all civilisations. Often a symbol of strength and associated with the elements of water, earth and fire, dragons

are guardians.

The etymology of the word dragon stems from the word to look, to see with clarity. They are the ones who keep watch over our treasure. They also symbolise enemies coming together and embody the fascination of the unknown. **More than an urban project, the Dragon is also a formidable way to bring fresh appeal to the city of Calais.**

A ride on the back of the dragon

Monumental in **steel and sculpted wood**, with a motion that is inspired by that of reptiles, it is truly expressive and **breathes fire, smoke and water** in a variety of forms.

Smoke escapes from its body through around thirty vents. Its eyes, eyelids, ears, mouth, tongue and fins move.

He can lie down, stand up, run at up to 4km/h and beat its thick canvas wings.

Passengers step onto its back and onto a covered terrace via a staircase that runs along its tail.

Every day he wanders along the seafront, **carrying 50 people on his back for a journey that lasts around 45 minutes**. The dragon then goes to rest at nightfall in his temporary home in the « Ephemeral City ». Installed on the seafront, this is a veritable venue for encounters, meetings and conviviality for all visitors.

Other new arrivals

Several types of creatures inspired by the dinosaurs will arrive after 2020 at different emblematic venues across Calais. **Each machine is linked to a place that will have undergone a transformation:** The Dragon of Calais on the seafront and at Fort Risban, monitor **lizards** you can ride on at Le Dombuker, a

family of **iguanas** at Fort Nieulay and the Great Iguana in the Saint Pierre quarter.

Each of these machines will roam the city bumping into one another and some of them will be travelling along the main roads.

www.compagniedudragon.com

Technical specifications

Height: 10m to 15m
Mechanisms: water, air, electricity, hydraulics
Width: 5m to 17.5m, wings extended
Materials: wood, metal, leather, canvas, copper

Length: 25m
Effects: breathing, smoke, flames, water jets, sound
Weight: 72 tonnes
Operation: 4 to 17 people (shows)
Speed: 0 to 4km/h
Capacity: transports 50 to 60 people



STREET ART IN BOULOGNE-SUR-MER

Since 2016, the city of Boulogne-sur-Mer has been committed to a new approach that centres on creativity, with local and international artists at its heart. The aim? To invite locals and visitors to look at the city differently thanks to Street Art murals that decorate the walls and gables, but also electrical switch boxes.

During summer 2019, 6 new murals were created for the 4th edition of the Street Art Festival. In this way, visitors and locals can discover works by the likes of SMUG, alias Sam Bates. He is one of the greatest artists currently working in photorealism. His colourful and ultra-precise creations are inspired by photos that he transforms into monumental works, whilst adding a personal touch.

Awards

The Boulogne art trail was awarded the jury prize in the « Living Environment » category during the 24th edition of the Fimbacte Festival.

« An original project that lets people discover the city and reinforces its appeal ». This is what the grand jury of

French artists Mantra and Love created the largest mural along the Street Art trail in Boulogne-sur-Mer, covering a surface area of 750m²! Mantra provides the figurative touches, giving nature pride of place once again in the city. As for Love, he has been « grafting » for over 35 years; that's his means of expression. Working together since 2012, the works of Mantra and Love tend towards abstraction, paying particular attention to the composition of colours. Or even...

Peeta, alias Manuel Di Rita, is famous the word over thanks to his unique amorphous style. Through his works, this Italian artist seeks to change the perception of a site that is well-known to locals, leading them to have a different understanding of their environment and, therefore, of reality itself.

the Fimbacte Festival, made up of experts and professionals in town planning and communications, said when eulogising this cultural project in Boulogne; magnificent national recognition for « Street Art »!

www.ville-boulogne-sur-mer.fr/street-art

The Street Art trail

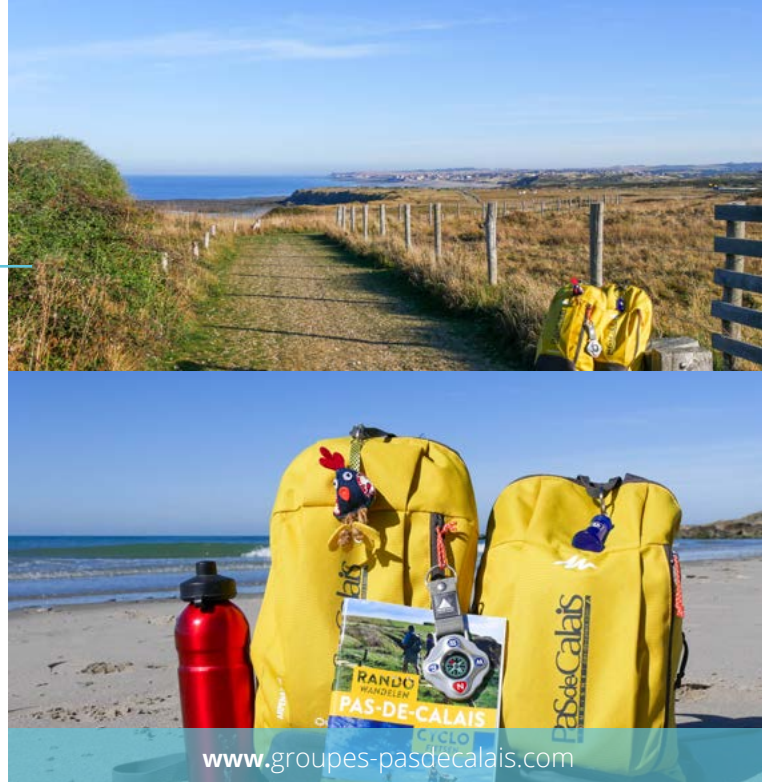
This lets you explore works of art as you would in a **museum**, except **out in the open air!**

A new way of seeing the city of Boulogne-sur-Mer at your own pace.

Backpacks on tracks

There's nothing like some stunning images to encourage you to head out along the walking trails of the Côte d'Opale. Armed with their yellow backpacks, walking enthusiasts Sylvie and Alice share their most beautiful views, landscapes and encounters with you.

In this way you can explore the latest trail from the Bay of St Jean to Wimereux, or even the trail from Les Airs d'église to Bazinghen that has a more countryside feel. On the web site you can discover other trails throughout the Pas-de-Calais, photographed by our two favourite walkers!



The Vélomaritime trail

A new cycling itinerary that links Roscoff and Dunkerque

From the English Channel to the North Sea, linking Roscoff in Brittany to Dunkirk on the Belgian border, no fewer than **1,500km** are available to all visitors who love cycling trails. There's no shortage of highlights, as the trail takes in 3 sites that are listed as World Heritage by UNESCO, 5 sites that have or are in the process of gaining the Grand Site de France label, 4 national monuments and 2 listed Most Beautiful Villages in France.

As its name suggests, Vélomaritime® is **an itinerary that is resolutely focused on the sea**. It showcases coastal nature sites, but also historic and cultural heritage, a multitude of open-air activities, the rich gastronomy from the land and the sea, the ports, seaside resorts and outdoor accommodation...

It is committed to a sustainable approach and highlights the values of conviviality, authenticity and sharing. With much of the trail running along undulating little roads, this is an ideal itinerary for cyclists looking for a sporting challenge or even those with an e-bike.

Although 80% of the trail in Pas-de-Calais has been completed itineraries are currently only partly accessible, but it is officially due to be 100% ready during 2021. Boasting the Accueil Vélo label, you are guaranteed a high-quality welcome and services right along the cycling trails (every 5km) to help out touring cyclists: accommodation, bike hire, restaurants, repair shops, tourist offices and sites to visit.

www.lavelomaritime.fr &
www.francevelotourisme.com



A little further afield

The Vélomaritime is the French section of the EuroVelo 4, one of the 16 cycling itineraries of EuroVelo, the network of European cycling routes. It represents a total of 4,000km from Roscoff in France to Kiev in Ukraine, passing through Belgium, The Netherlands, Germany, Czech Republic and Poland.



www.hotelbarriere.com

BREAKS & GOURMET TREATS

Le Westminster enjoys a glamorous makeover

Le Touquet - Paris - Plage

On 1st December 2019, the legendary Le Westminister Hotel closed its doors to carry out **6 months of ambitious works**.

In the heart of Le Touquet, the seaside resort nicknamed « The Pearl of the Opal Coast », this jewel of the Roaring Twenties that was acquired by Groupe Barrière in 2016 will be entirely renovated by interior designer Bruno Borriane, who will seek to retain the Art Deco spirit of this legendary venue to which we owe the decoration of the very first Club de Jeux Barrière casino located on the most beautiful avenue in the world, just opposite Fouquet's on the Champs Elysees. Its 115 rooms, the bar and the two restaurants, including Le Pavillon with its Michelin star, will be entirely reimagined and modernised.

The hotel is due to **reopen during June 2020 with a new 5 star classification**.

Les chambres à part

Bazinghen

5 minutes from the Deux-Caps site, « Les Chambres à Part opened its doors in spring 2019.

20 Béatrice welcomes you to this home that boasts an ultra-thoughtful and feminine decor that marries with the property's old stones: « I spent months in second-hand shops and restoring old furniture in order to give the venue real cachet ». This is the result! Classic, baroque or romantic, every room has its own personality.

We love: breakfast, a hearty brunch that is 100% home-made.



Contact : Danielle Cuvellier - cuvellier.daniel@gmail.com.



www.lepetitroulis.fr

A charming villa

Wimereux

Ideally placed in the heart of the small seaside resort of Wimereux, this home was born from the shared desire of Philippe and Fabien to share a love of their region, their taste for decoration and their yearning for encounters.

In perfect simplicity, they welcome you in order to offer a tranquil break with an abundance of fresh air. Very recently renovated, and open since August 2019, this lovely Wimereux villa has managed to retain the charm of yesteryear whilst still providing modern facilities: 4 beautiful rooms, a wellbeing space, Jacuzzi on the terrace.

From 140 Euros per night.

Levain et l'Apéro

Bazinghen

Julien Caron, a 27-year-old with a Masters in political ecology, is a nature lover who is originally from the Desvre area who set up home in Bazinghen in July 2019 in order to start an **artisanal bakery business focusing on the aperitif**. « One day, I stepped into a bakery and realised that most of them offer a range of sweet products in addition to their varieties of bread. In order to stand out, I decided to forget about traditional pastries and instead offer a range of savoury products in addition to my bread: that's how LEVAIN & L'APÉRO came about! » All products here are made using **organic flour and quality ingredients**.

This young baker offers a dinner aperitif home delivery service for members of the public and businesses... Ideal if you're coming to spend the weekend along the Côte d'Opale! He can also be found at the markets of Wissant and Le Touquet...



www.boulangerieaperitive.fr



www.cotedopalegourmande.com

The Côte d'Opale Gourmande

Boasting a dynamic team that is **made up of producers and restaurateurs from the Côte d'Opale** with a commitment to their local partners, the members of the association take part in events like the Fêtes de la Mer in Boulogne-sur-Mer or even cookery competitions such as L'Assiette Gourm'hand that takes place annually in Bailleul in Flanders.

In spring 2020, a gastronomic meal will showcase the emblematic dishes of recently retired members, like Roland Gautier (father of Alexandre, La Grenouillère, La Madelaine-sous-Montreuil) an even Alain Delpierre (father of Benjamin, L'Atlantic 4*, Wimereux) and a project involving special meals for the Restos du Coeur restaurants will be held at Étaples-sur-Mer.

21

Aux Pêcheurs d'Étaples

Étaples-sur-Mer

A veritable institution since 1978, Aux Pêcheurs d'Étaples is modernising whilst still retaining its authentic feel and the soul of the restaurant. Major renovation works were carried out under the watchful eye of the Calais-based firm of architects, Roche. Specialising in designing restaurant venues, this firm has been creating a range of different spaces from which the views of La Canche will be visible to all diners. An extension will be put in place on the La Canche side as well as a beautiful terrace that can accommodate around forty diners in addition to the 120 covers inside the restaurant. **Fish remains at the heart of the cuisine** offered by this semi-gastronomic eatery. This is **sourced directly from the fishing fleet affiliated to the restaurant and fishmongers**.

Reopening in early July 2020.



www.auxpecheursdetaples.fr

Côte d'Opale, 10 must-sees

Nausicaa, dive into Europe's largest aquarium

In 2018, a massive expansion of NAUSICAA, the French National Sea Centre in Boulogne-sur-Mer (France), opened to the public..

An amazing destination for lovers of the sea, where you can experience the vastness and fragility of the Ocean.

Built in the shape of a Manta Ray, the new building houses **one of the largest aquariums in the World, holding a staggering 10,000 m3 of water** (to give an idea of the scale, the equivalent of 4 Olympic pools).

Modelled on the island of Malpelo, off the coast of Colombia, this giant aquarium recreates the ecosystem of the high seas.

Sharks, manta rays and shoals of other fish will populate this ecosystem, with almost 60,000 creatures in the community!

An 18 metre-long transparent tunnel offers a totally immersive experience with panoramic viewing angles.

A vast viewing panel, measuring 20 metres long and 5 metres high, gives spectacular views for the visitor. The exhibition also features interactive attractions and dazzling new sights.

Boulevard Sainte-Beuve, à Boulogne-sur-Mer

www.nausicaa.fr - Tél : 00333 21 30 99 99

Rates adult : 25,90€, child : 19,50€

2020 : 10 years of Mr.Goodfish

In 2020, the European programme « Mr.Goodfish » celebrates its 10 years. On this occasion, a new exhibition is set up at NAUSICAA.

Special events and sampling sessions will be proposed.

Mr Goodfish encourages a **sustainable use of the resources of the sea**, letting the consumers know which fish to eat according on the season.

www.mrgoodfish.com

Must-sees - Opal Coast

Hiking on the Grand Site des Deux-Caps

The 23km stretch of protected landscapes and habitats from Cap Blanc-Nez et Wimereux boasts a rich fauna and flora. The best thing to do is to explore on foot along the GR 120 walking route and the countless other walking trails. The Maison du Site des Deux-Caps welcomes visitors with a programme of nature and discovery activities : Nordic walking, electric bike hire, departure points for walks and mountain bike trails.

*Maison du site des Deux-Caps
Ferme d'Haringzelle, à Audinghen*
www.lesdeuxcaps.fr - Tel : 00333 21 21 62 22



Explore the Crypt in Boulogne-sur-Mer

One of the largest in all France, the crypt is a veritable maze of galleries that stretch beneath the entire surface of the basilica of Notre-Dame.

In a space that has been completely redesigned, from the floor to the restored frescoes, a trail highlights the collections of tombstones and religious art, evidence of the medieval church and of the cult of Notre-Dame de Boulogne

Rue de Lille, à Boulogne-sur-Mer
www.crypte.ville-boulogne-sur-mer.fr - Tél : 03 21 87 81 79



Discover France's largest WW1 Cemetery

Etaples Military Cemetery is the largest cemetery for Commonwealth forces in the whole of France, with more than 11.000 male and female soldiers graves. During the First World War, the military had extended **the largest British base in France. Over a million men** passed through the training camp and hospitals between March 1915 and November 1918. A sign at the entrance summarises in English the history of the cemetery and a QR code provides access to additional content.

Route départementale 940 ETAPLES
Tel : +33 (0)3.21.09.56.94
www.cwgc.org



Must-sees - Opal Coast



Exploring the seafront architecture of Le Touquet-Paris-Plage

This resort is over a century old and carries its age with charm! Beyond the dynamism of its events and sports scene, Le Touquet stands out because of its seafront architecture. At the beginning of the 20th Century, the resort experienced a veritable «Golden Age». The covered market, the Westminster, the race course, the aerodrome, the town hall, the post office and the Quételart villas all provide precious evidence of this era.

A bike ride is the best way to appreciate the architectural elements of the resort.

Guided cycling visits:

7€ Adult - 5€ child 5-12y.o. - 19€ family pass

Office de Tourisme du Touquet-Paris-Plage

370 avenue Louis Aboudaram

www.letouquet.com – Tel : 00333 21 06 72 00

An initiation into sand yachting

The Opal Coast is undoubtedly the cradle of this sport that **became popular in the 1910s**. With their long expanses of fine sand, the beaches of the Opal Coast provide the perfect playgrounds for enjoying this discipline that requires just one thing: wind.

The enormous advantage of this sport is that that you can very quickly pick up the technique and start enjoying yourself !

Many clubs propose this activity, with English-speaking instructors



Sampling the fruits of the sea

Cod, whiting, sole, herring... the fruits of the sea are the pride of local gastronomy! The port of Boulogne-sur-Mer supplies most of what is served by local restaurateurs as well as supplying members of the public that find the very best fish at the markets and on the stalls on the quayside.

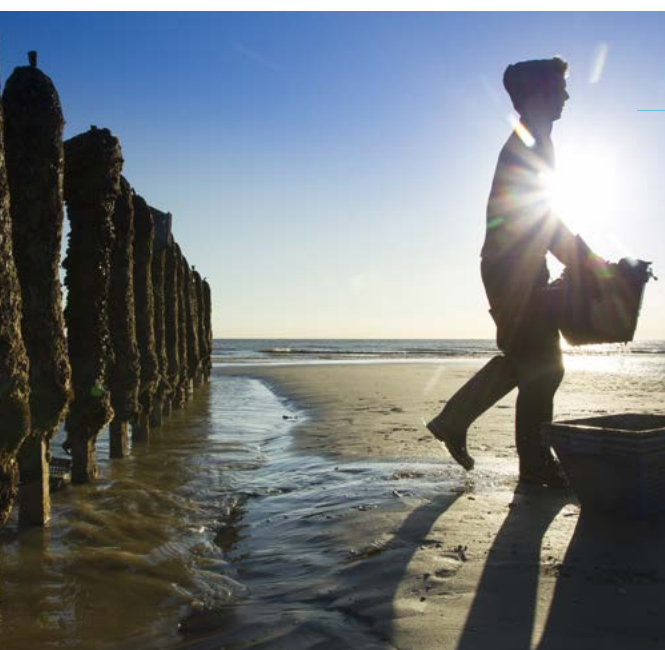
Good to know: in Etaples-sur-Mer, Maréis offers a programme of **culinary workshops** based on fish, a unique opportunity on the Opal Coast to learn how to prepare the local catch.

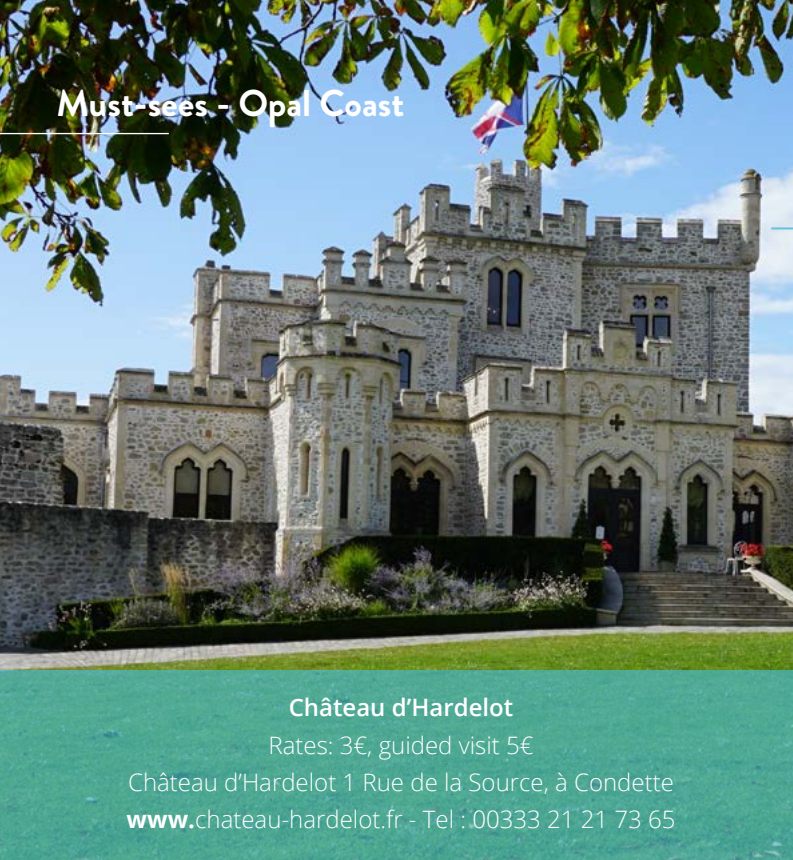
10 pers. / course. Rate: 20€ per pers

Mareis, sea fishing centre

Boulevard Bigot Desceliers, à Etaples-sur-Mer

www.mareis.fr – Tel : 00333 21 09 04 00





Château d'Hardelot

Rates: 3€, guided visit 5€

Château d'Hardelot 1 Rue de la Source, à Condette

www.chateau-hardelot.fr - Tel : 00333 21 21 73 65

Entente Cordiale at the Château d'Hardelot

How could you fail to be surprised by the fantasy of this building with **allures of a Tudor manor** !

Restored by two English aristocrats in the 19th century, the château became a hot-spot for the British « gentry ». Nowadays, a visit to the fully-furnished interior plunges the general public into a truly Victorian ambiance.

As well as the château there is the **Elizabethan theatre**, whose music and theatre programme celebrates Franco-British cultural relationships.

Set off in the tracks of the Second World War

During the Second World War, the coast of the Nord became one of the key sections of the **Atlantic Wall**, a system of German coastal fortifications that stretched from Norway to Spain.

The beaches of the Opal Coast still retain a number of reminders of these defences.

The Remembrance Museum in Calais, the Todt battery in Audinghen, the 39-45 Museum in Ambleteuse and the Mimoyecques Fortress reveal all aspects of the conflict along the Opal Coast.

Addresses for the sites and museums on

www.history-pas-de-calais.com,

Second World War section

Discover the Centre for Lace & Fashion in Calais

Emblematic of a savoir-faire that is unique in the world, this centre is the leading museum of lace woven on a draw-loom.

Housed within an authentic lace manufacture site of the 19th Century, the collections retrace the history of lace from its manual production right up to the most contemporary creations.

The high-point of the visit: **seeing the famous Leavers in action**, monumental cast-iron machines that allow exceptional fabric to be produced.



Cité de la dentelle et de la mode

Rates 7€ / 5€

135 Quai du Commerce, à Calais

www.cite-dentelle.fr - Tel : 00333 21 00 42 30



Hills & Dales

DIVING BACK INTO MEDIEVAL TIMES

The 500th anniversary of the meeting at the Field of the Cloth of Gold

Guînes

In June 2020 the 500th anniversary of the meeting at the Field of the Cloth of Gold between **François I and Henry VIII** will be celebrated.

The English King made a stop at **Calais, an English city during the Renaissance**, before heading to Guînes by boat.

Son et lumière show

Guînes – 5th, 6th and 7th June 2020

The Association of the Field of the Cloth of Gold (120 members), who organise feasts (dinner & show) every year, will be putting on a son et lumière show entitled **«The Return of Arthur to the Field of the Cloth of Gold»** on 5th, 6th and 7th June 2020.

More than 200 figures and actors will celebrate the 500th anniversary of the meeting at the Field of the Cloth of Gold and will take to the stage to depict a moment 20 years

Even though this alliance was ultimately unsuccessful, the period remains rooted in local memory. The city, as well as the association (who love to recall this historic event), want to give a particular nod to this meeting through a range of festivities. You can expect **concerts and entertainments taking place in Calais, Guînes and Ardres but also in Hampton Court, the palace of Henry VIII.**

after the pillage of Guînes by the English in 1498... one in which the young Arthur, the Duke of York, and the beautiful Jeanne come together during the festivities surrounding the meeting at the Field of the Cloth of Gold between François I and Henry VIII.

Entertainment and meals from 7:30pm.

More info and bookings : www.paysdopale-tourisme.fr
contact@paysdopale-tourisme.fr - Tel 00333.21.35.73.73

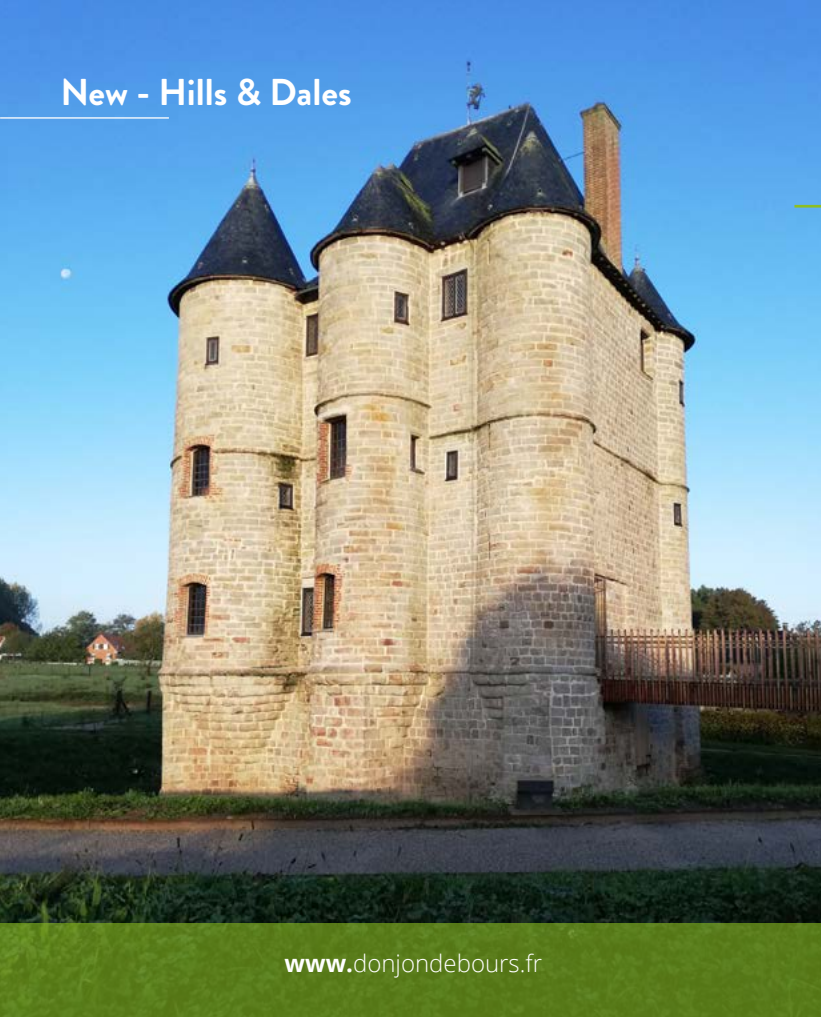
Programme in the Pays d'Opale

Throughout 2020, discover the programme of celebrations for the 500th anniversary of the meeting at the Field of the Cloth of Gold presented by the Pays d'Opale, from Guînes to Ardres.

At the Tour de l'Horloge in Guînes there is a Playmobil exhibition on the « Field of the Cloth of Gold» from 17th to 24th April, as

well as Museum Night on 15th May (with parades from the Tour de l'Horloge and conferences about period dress). Concerts of Renaissance music, history conferences, entertainments, shows and a Great Renaissance Ball will punctuate the festivities to mark the meeting between François I and Henry VIII that took place in June 1520.

More info : www.paysdopale-tourisme.fr



www.donjondebours.fr

KEEP YOUR MEDIEVAL EXPERIENCE GOING...

Donjon de Bours

Ternois

Entirely made of sandstone, this astonishing medieval tower is a rare example of **a Lord-Knight's residence**.

Open to the public since June 2019 after **ten years of renovation works**, this fortified house's main function was as the home of a noble family. The Lord imposed his power over the local area from here thanks to its characteristic construction. Nowadays fully-restored, this fortified home boasts modern and immersive scenography. From the cellar to the private apartments, and passing through the public halls, the daily life of the Lord of Bours is revealed here through guided visits.

In 2020, several highlights will bring life to the cultural programme at the Donjon de Bours. The summer season kicks off with music in April, a medieval feast in June, European Heritage Days in September...family workshops will also be held during school holidays.

Agincourt 1415, an updated history of the famous battle

Inaugurated in August 2019, the « 1415 Agincourt, the Middle Ages in the Sept Vallées » Centre is the guardian of a collective memory that stretches back to the XV Century, although they had to wait until the early 1980s for the public opening of an exhibition presenting the battle of 25th October 1415 at a community hall in the village.

Twenty years later, in June 2001, the «Historic Medieval Centre » opened its doors before being extended in 2005. The centre became a key site for remembrance tourism and historic tourism in the region, allowing visitors to discover **one of the only two remaining battlefields of the Hundred Years War in Hauts-de-France**.

The centre has benefitted from **major transformations** to its architecture and scenography that have resulted in entirely reimagined and extended displays focusing on daily life in the XV Century, but also an extension to the exhibition space of nearly 250m².

By connecting the present and the past, offering a modern-day and living look at scientific understanding in the time of the Battle of Agincourt and the late Middle Ages, the scenography leads the visitor to explore a lost time in which life had the « smell of blood and roses. »



www.agincourt1415.com



www.pieux.ellohaweb.com

BREAKS & GOURMET TREATS

PieuX- Guest House

Montreuil-sur-Mer

PieuX is a townhouse from the 1800s, now transformed into a friendly and welcoming guest house. This new haven of peace boasts décor that was skilfully **taken care of by Chef Alexandre Gauthier, who has two Michelin stars from La Grenouillère.** Situated in the very heart of the town of Montreuil-sur-Mer, the 4 guest rooms exude the good life and inspire a desire for cocooning. On the ground floor of the house you can find spaces for coming together and communal living: the lounge and the fireplace, ideal for sharing a coffee over a game of draughts. The winter garden is a space that is full of light, greenery and warmth. The breakfast room is like a little bistro every morning, bright and soothing. From: 120 Euros per night.

Hôtel Mercure Saint-Omer

Saint-Omer

The Mercure Saint-Omer Centre is located in town, close to the train station, just a few kilometres from Calais, Boulogne and Dunkirk.

You can visit the historic fortified town, the cathedral, the public gardens and the museum of the Hôtel Sandelin. Nearby you will find La Coupole, the Audomarois Marsh, the Arques glass works and the gin distillery of Houlle.

The hotel offers 74 rooms with free Wi-Fi, a restaurant, bar and parking.



www.accorhotel.com

Les Bobos à la Ferme; much more than a gîte

La Madelaine-sous-Montreuil



www.lesbobosalaferme.fr

So much more than just a rental gîte, Les Bobos à la Ferme is the story of a couple and their little red-headed daughter who was suffering from a rare condition, encouraging the family to **quit Paris and their jobs in order to seek a different way of life.** The spacious gîte of 90m² is the only new building on site. With its wooden frame, this is a high-end gîte boasting every comfort that is situated peacefully in the bucolic little village of La Madelaine-sous-Montreuil. Able to accommodate 6 people, it has 2 bedrooms, a lounge, a well-equipped open kitchen, a bathroom and a utility room. The gîte adheres to "Tourisme & Handicaps" standards. « We want to welcome everyone: disabled and able bodies guests, caregivers, young, old. The aim is to make disabled visitors feel included in society so that they can relax here just as much as anyone else, allowing all guests to get away from their day-to-day. »

Bout du bois

Huby-Saint-Leu

Isabelle and Robin, both members of the « Humanité et Biodiversité » association founded by Hubert Reeves, welcome you to their guest house at the back of a forest that overlooks the Sept Vallées, in the heart of Huby-Saint-Leu old town, not far from Hesdin, the marshes, the Côte d'Opale... The charm of this old home, renovated simply in a sustainable manner, resides in its **blend of old local stone and brick** and its traditional beams and floorboards. The paved courtyard provides intimacy as the venue for an aperitif or for breakfasts with an organic, local and vegetarian slant. One guest room was opened in June 2019, with another room and a gîte still to come... From 75 Euros per night.



www.leboutdebois.com

Le soldat laboureur

Eps Herbeval

A veritable small traditional country inn, Le Soldat Laboureur is located close to the Donjon de Bours, Agincourt and even the gardens of Bergueneuse. This **gourmet stop** is ideally placed to delight and refresh those in between two visits! Here you can savour **traditional cuisine** made with local and seasonal produce in a convivial ambiance and a unique and well-preserved setting!



Contact : Le soldat laboureur - Tel 00333 74 05 02 29

Aperitif cruises

The Audomarois Marsh

Step aboard the Claimarais or one of the **traditional Bacôve boats** every Thursday evening from 7pm in July and August for an aperitif cruise through the Audomarois Marsh. As well as the cruises that run on Sunday mornings at 11:30am in July and August, other trips are regularly arranged during the rest of the year.

The products served are locally sourced and dishes are created on site at their restaurant « La Baguennette » with gourmet treats that include suckling pig terrine, goat cheese pots, cauliflower cake and local beers, among many others...



www.isnor.fr

The artisanal brewery of Clairmarais Abbey



www.abbayedclairmarais.fr

After **laying dormant for 230 years**, the brewery at Clairmarais Abbey is due to spring back to life thanks to a project led by 2 local villagers: Charles, the owner of the abbey's farm and eager to restore and preserve these buildings that date back to the XVII Century, and Laurent, a beer enthusiast who is currently changing his profession. Their objectives? To create a range of artisanal beers **in the Cistercian tradition**, to develop beer tourism in association with the history of Clairmarais Abbey and to create an extra commercial activity based at the abbey's farm in order to fund the restoration and preservation of part of the buildings.

Although the original walls and framework dating from the XVII Century are still in good condition, the establishment of a brewery requires the addition of some interior work and, above all, time... The aim is to be brewing on site by April 2020! In the meantime and during the work, beer will still be brewed and bottled at the Brasserie Bellenaert in Bailleul and at the Ferme Brasserie de Wagnonville in Douai. Hops and yeast will mostly be sourced from the region, the St Bernard well will supply the water and the barley will be grown on the farm itself.

30

The White Star artisanal brewery

Marconne

Formerly the « Brasserie Saint-Loupoise » (named after the inhabitants of Huby-Saint-Leu), Fabrice is launching the even more ambitious project of establishing the new White Star brewery, which is currently based in Marconne, by July 2019. In this way the brewery will be able to increase its production capacity and also develop a space for welcoming the public and sales that will allow visitors, groups and individuals to discover their savoir-faire and passion for this ancestral product.

Fabrice and his son can also arrange beer appreciation sessions to explore the different styles of beer and their subtleties, tasting soirées and beer and food pairings. The beers on offer are mainly of the high-fermentation variety. In the case of some of the beers, cold hop infusion (during the laying down period) provides a greater aroma and flavour. **The particularity of the White Star brewery is a desire to produce Anglo-Saxon type beers with added zing**, but also a range of classic beers that are more accessible...

To enjoy in moderation!



Ludovic Dez - 06 81 23 23 08

brasserieartisanalewhitestar@outlook.fr

Palais de la Cathédrale: a return to the past

Saint-Omer

The Palais de la Cathédrale is a private residence that opens to the public thanks to an exceptional project aimed at sharing the restoration of its heritage and the memory of the site. Everything you see here is the fruit of an incredible reconstruction project for a venue that is unique to the north of Paris. As it was still a medical laboratory until 2018 and its interior was completely unknown, its renaissance truly was an adventure. From the X Century wells to the exceptional Charles X rooms and touching on the kitchens, the XII Century cellars, the XVIII Century and Empire bedrooms, this site allows visitors to experience the daily life of a palace whose interior has evolved over the course of the centuries and was maintained intact and preserved by the same family. No other site in the Hauts-de-France can boast so many objects, canvases and furniture of such quality and is open for visits to the public 6 days a week. It is also and above all **a place where visitors can sit down on royal armchairs, open drawers, flick through photographs, handle the sculptures and simply chat with the proprietors.**



www.tourisme-saintomer.com

31

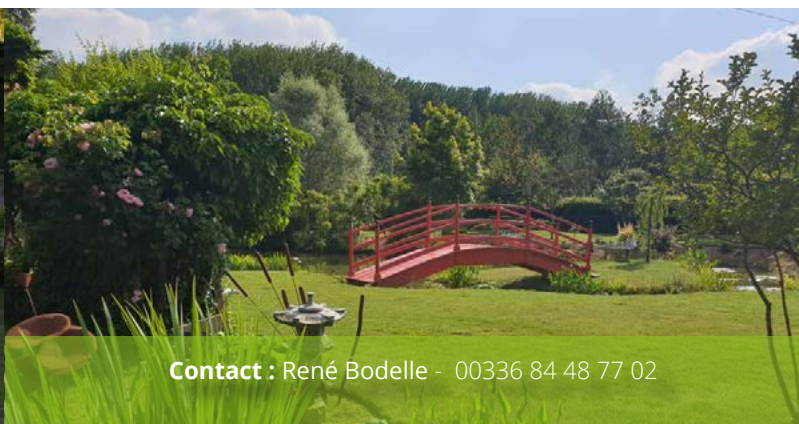
The Jardin de la méditation

Saint-Venant

For the last **35 years**, day after day René Bodelle has tended a garden that covers an area of 5,000m² and is inspired by Asia. Attentive to every detail and careful to do things the right way, René has planted trees and shrubs, but has also personally created the outdoor furniture that makes this garden so charming: a pagoda that's perfect for picnics, a bridge that spans the pond and is ideal for taking wonderful photos during special events, Chinese lanterns sculpted into the ground, a dry river and many other features besides. Every tree and shrub has been painstakingly planted and

then trained over time with the help of Mother Nature.

Open to the public since May 2019, guided visits start by exploring the two magnificent albizzias (silk trees). Along the walk, visitors can discover bolusanthus, tulip trees, dove trees, bonsais, trees with coppery bark and bamboos, each in turn giving the garden a different aspect with every passing season. Three ponds are home to a collection of water lilies that provide a resting place for countless frogs and dragonflies.

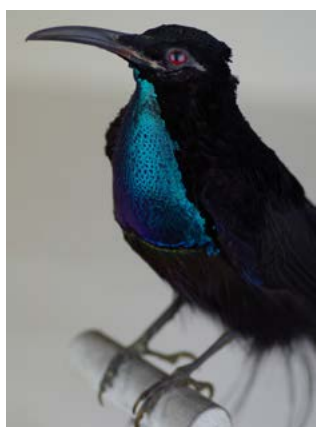


Contact : René Bodelle - 00336 84 48 77 02

Main events 2020

Exhibition Henri Dupuis; 200 years of Passion

From 14th Feb. to 16th August 2020 - Musée Sandelin - Saint-Omer



A batchelor and rentier, Henri Dupuis (1819-1889) devoted his entire fortune and a good part of his time to collecting, **commissioning explorers to bring back objects he desired and setting up his home to exhibit this collection** he had curated. Upon his death in 1889, he bequeathed his home and his entire collection to the city so that it could be « useful to all, especially the youth », with the proviso that it should be presented to the general public in order to increase the Audomarois people's understanding of their Flemish heritage and of nature.

Come and discover Henri Dupuis at the heart of a trail that will reveal to you the great pieces of his collection and that extends into the rooms of the Sandelin Museum in which you can explore the works left by him, far too numerous to be displayed solely within the exhibition itself.

6th Jaaz Festival

3rd - 7th July 2020 - Saint-Omer

Over 30 jazz concerts are held around the town. Enjoy an afternoon drink laying on a deck chair in the garden of the Motte Castrale to the sound of free jazz or a big band concert sitting on a terrasse after dinner. The Jaaz festival is growing year on year.

www.saintomerjaazfestival.fr



Plein feux sur les Roses

20th and 21st June - The Mela Rosa nursery - Grigny



The « Plein Feux sur les Roses » open house takes place every year on the third weekend in June.

The Mela Rosa garden and nursery bursts with colour and aromas for this occasion. Roses are in full bloom and dot the vegetable garden, orchard and ornamental gardens. This is a key rendezvous of the Sept Vallées, attracting a great many visitors from far afield. It is therefore the ideal opportunity for individuals to visit the garden and to admire, select and purchase rose bushes for their own private gardens...For those who work here, this event offers them the immense pleasure of presenting, sometimes for the first time, new varieties of rose bush.

The Mela Rosa nursery is also an ambassador company that works across countless regions of France and in Belgium.

www.melarosa.fr & www.creamelarosa.com





Hills & Dales, 10 must-sees

A boat trip around the Audomarois marshes

33

Saint-Omer, city of art and history has a lovely market and a preserved heritage : cathedral, Jesuit chapel, castle mound, great houses... The Hôtel Sandelin, which houses the collections of the museum, is one of the finest examples of an XVIIIth Century mansion house.

This is without doubt one of the most pleasant spots in the Pas-de-Calais. Situated in Saint-Omer, the Audomarois Marshes earned the **UNESCO « Men and Biosphere »** label in 2013. This area covers 3,700 hectares and stems from 13 centuries of work in altering the course of the River Aa, clearing and transforming a swamp into a marshland that can be cultivated and inhabited.

Today, the marshes can be visited on Bacôves; small traditional wooden boats.

La Maison du Marais visitor centre presents the natural environment of the marshes as well as guided boat tours

La Maison du Marais

Saint-Omer

www.maison-du-marais.fr

Rémi Colin, the last local boat maker, or « Faiseur de Bateau » proposes visits of his workshop as well as boat trips onboard his hand-made embarcations,

from April to September

Les Faiseurs de Bateaux

www.lesfaiseursdebateaux.fr

La Maison du Marais

36 Avenue du Maréchal Joffre
Saint-Omer

www.maison-du-marais.fr

Tel : 00333 21 11 96 10

Les Faiseurs de Bateaux

Visit of the workshop and boat tour
Adult 9,5€, child 7,50€, under 5 free

48 route de Clairemarais Saint-Omer

Tel : 00336 08 09 94 88



Travelling along the Via Francigena, From Canterbury to Rome

In the Pas-de-Calais, one road in particular leads to Rome. **In France, the Via Francigena begins in Calais** and crosses the department up until Rocquigny in around a dozen stages of approximately 20 kilometres. This former pilgrimage route is a blessing for walkers that want to head off the beaten track.

On the way, the Via Francigena reveals one or two secrets: Licques Abbey, the old linden of Quercamps, the Acquin-Wesbécourt grotto, the birth house of Saint-Benoît Labre...

www.mongr.fr : Via Francigena in the Pas-de-Calais, four days in the footsteps of the pilgrims of Rome

Vintage motoring with « Les belles échappées »

In the Audomarois countryside, « Les belles échappées » offers excursions with retro accents aboard a **Citroën 2CV, Volkswagen Kombi, Vespa Calessino...**

Combining the pleasures of driving with discoveries, a road book is supplied to every driver prior to departure.

Among the new offers to explore in 2018: trips on classic mopeds that have returned in force and themed **circuits with a chauffeur** so you can be guided in total freedom.

« Les belles échappées »

Chemin des murs, ferme de l'abbaye, in Clairmarais

www.les-belles-echappees.com

Tel : 00333 21 98 11 72



34



Dive into history at La Coupole

A gigantic WW2 underground bunker, La Coupole was designed to prepare and launch V2 rockets, the secret weapons with which Hitler planned to destroy London. Converted into a historic remembrance centre, La Coupole allows visitors to understand the challenges of total war and the stages in the conquest of space that stemmed from the technology used for the V2. La Coupole also includes a 3D Planetarium that offers an unforgettable journey into Space.

La Coupole, rue André Clabaux,
62570 Wizernes

www.lacouple-france.com

Tel : 00333 21 12 27 27

Must-sees - Hills & Dales

Take your time in the gardens

The countryside is brimming with scenery that recalls Monet. At Reflets de Jardin in Penin, magnolias and rhododendrons stretch out around a body of water that is dotted with water lilies. In Chériennes, the Jardin des Lianes offers a horticultural trail that is reputed for its rare hortensias. At La Caloterie, the Jardin de la Goutte d'Eau is home to an English-style quadrille with mixed border. In Séricourt, people flock to see the cathedral of roses and the topiary garden. Whilst at Bergueneuse, steel sculptures sit alongside the irises and the peonies.

Association des Parcs et Jardins du Nord/Pas-de-Calais

www.jardins-dhdf.com - Tel : 00333 21 03 62 31



Discover the pottery of Desvres

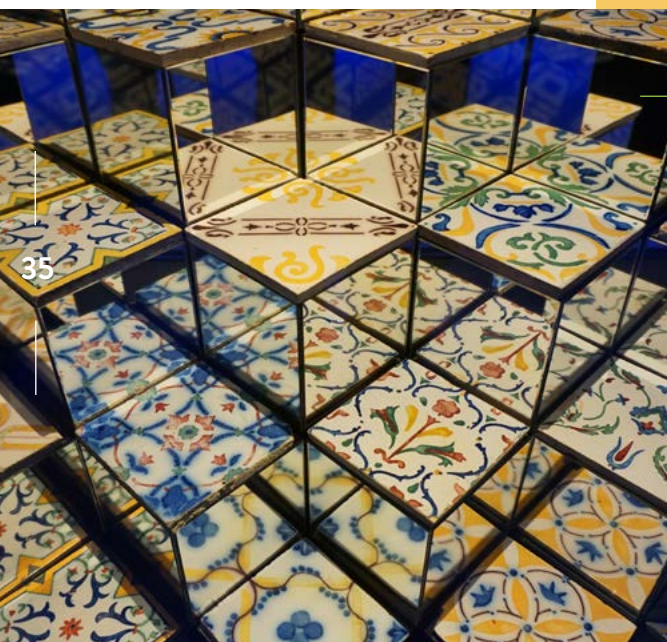
For three centuries, the potters of Desvres have excelled in the art of ceramics. At its high point, the production at Desvres exported to the whole world, with its all-round knowledge a particularity of the site. The museum showcases the history of this savoir-faire through a presentation of 600 objects, from the very first production in the 18th Century to the most contemporary creations.

Musée de la Céramique

Rue Jean Macé, à Desvres

www.musee-ceramique-desvres.com

Tel : 00333 21 83 23 23



Discover the Pas-de-Calais in the company of a greeter !

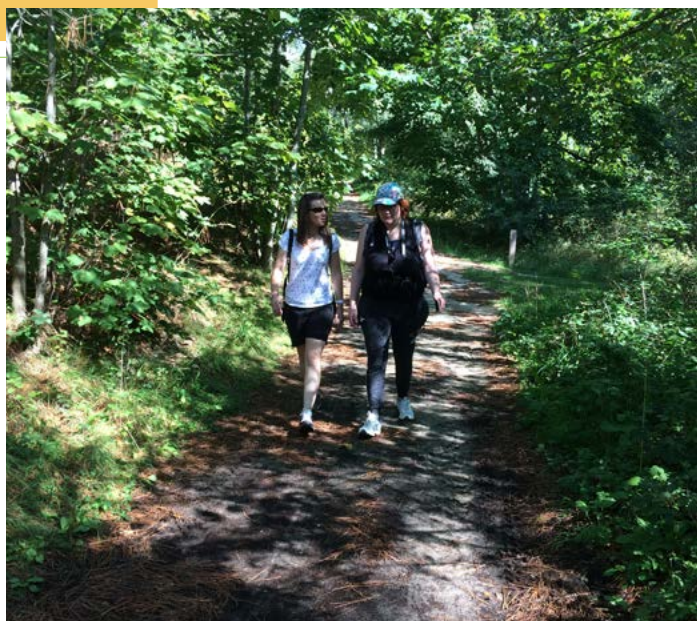
Pas-de-Calais Tourism has established a network of greeters « Made in Pas-de-Calais ». This volunteer network now has sixty members. It allows visitors to **see the area in a different way, in the company of a local who knows and loves the area.** Visits are free of charge, for 6 people maximum

Booking required

www.greeters62.com

Tel : 00333 21 34 10 60

accueil@pas-de-calais.com



Strolling on the ramparts of Montreuil-sur-Mer

Montreuil-sur-Mer is just the type of little town that people love to explore when on holiday. With its narrow, cobble-stone streets, its **picturesque houses and fine restaurants**, this fortified town seduces visitors immediately.

To fully appreciate the charm of Montreuil-sur-Mer, the simplest thing to do is to take the path along the ramparts, a circuit spanning 3km between the town and the countryside.



Office de Tourisme de Montreuil-sur-Mer

11-13 rue Ledent

www.tourisme-montreuillois.com

Tel : 00333 21 06 04 27

Sampling the best of gastronomy

For several years, Montreuil-sur-Mer has forged a reputation for its culinary savoir-faire. **Michelin star chefs and local producers** have contributed to making this fortified town with just 1000 inhabitants one of the hotspots of French gastronomy.

In order to promote the arts of the kitchen and advise visitors, Chef Alexandre Gauthier and expat Londoner Tim Matthews, owner of Maison 76, had the idea of creating La Destination Gastronomique: an online guide to help you sample the best of Montreuil-sur-Mer.

www.ladestinationgastronomique.com

36



Treat yourself to the chocolates of Beussent

These « Grand Cru » chocolates are among the very best. Reputed for the quality and care taken in their production, the chocolatiers at Beussent produce their **chocolate from beans grown at their own plantation** situated in the Amazon region of Ecuador. Visiting the chocolate factory and enjoying a tasting allows enthusiasts to discover all the secrets of this exceptional chocolate.

Visits and sampling on site with prior booking. 3.50€

66 Route de Desvres, in Beussent

www.choco-france.com - Tel : 00333 21 86 17 62

Pas-de-Calais, three destinations, three ambiances

PAS-DE-CALAIS TOURISME

www.visit-pas-de-calais.com

#pasdecalaitourisme

@pasdecalaitourisme



Discover Northern France



@pas_de_calais_tourisme



@ukpasdecalais



**PAS-DE-CALAIS
TOURISM**

OPAL
COAST

HILLS
& DALES

AROUND
LOUVRE-LENS

Press contact

Benoît Diéval

office 00333.21.10.34.60
mobile 00336.83.15.72.67
benoit@pas-de-calais.com

*Pas-de-Calais Tourisme
Route de la Trésorerie
62126 Wimille - FRANCE*